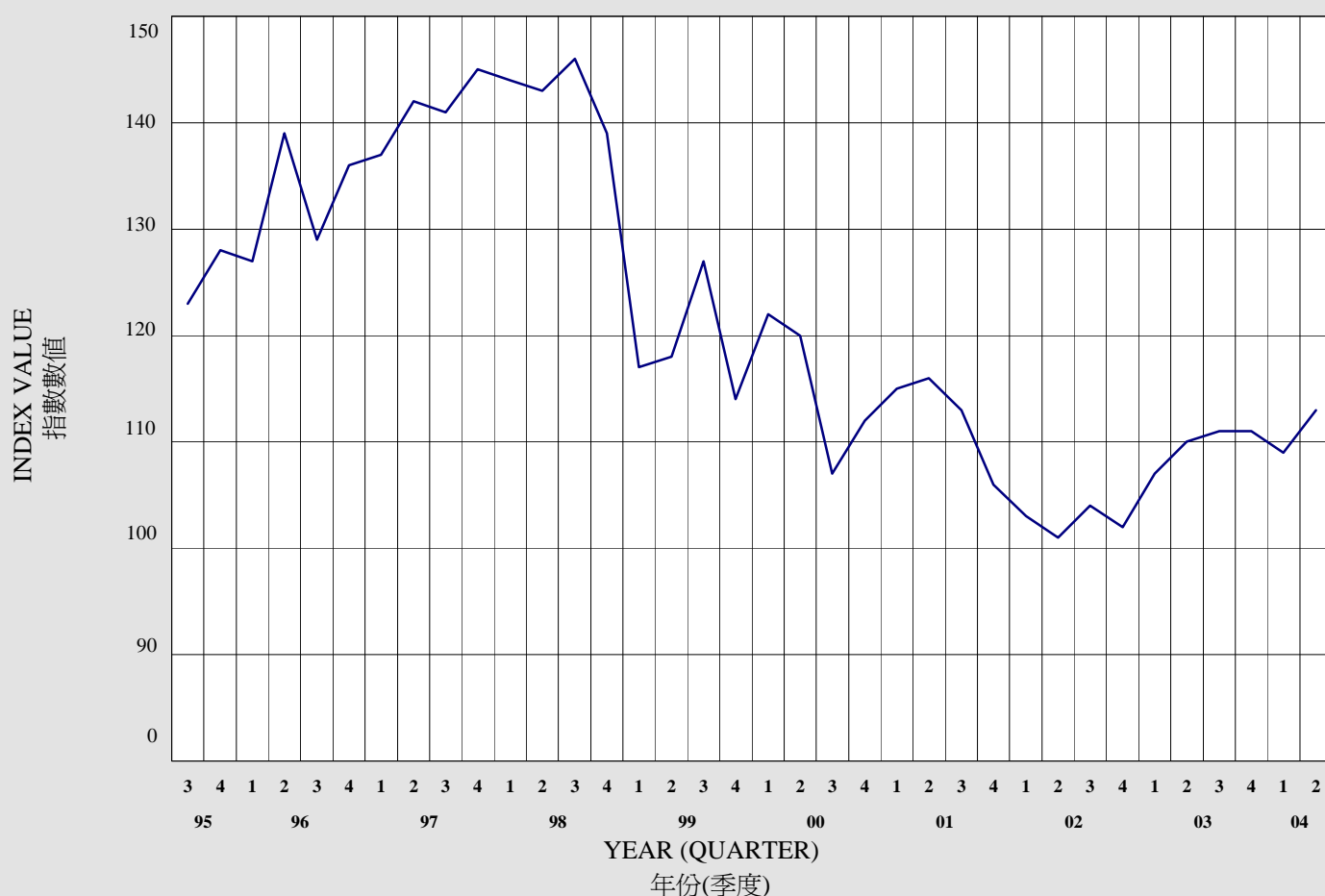


## BUILDING SERVICES TENDER PRICE INDEX (BSTPI) 屋宇設備投標價格指數



YEAR 年份	QUARTER 季度	BSTPI 屋宇設備投標 價格指數
1998	3	146
	4	139
1999	1	117*
	2	118*
	3	127*
	4	114*
2000	1	122*
	2	120*
	3	107*
	4	112*
2001	1	115*
	2	116*
	3	113*
	4	106*
2002	1	103*
	2	101*
	3	104*
	4	102*
2003	1	107*
	2	110*
	3	111*
	4	111*
2004	1	109*
	2	113*

1. The Building Services Tender Price Index (BSTPI) reflects the tender prices for building services installations in new building works undertaken by the Architectural Services Department. It complements the Tender Price Index for new building works undertaken by Architectural Services Department (TPI) which excludes building services works. It was first compiled in the 4th quarter of 1989 and the value for the 4th quarter of 1989 was taken as the base index of 100. Subsequent values are expressed in index form based on the 4th quarter 1989 value. The BSTPI is calculated in a manner similar to the TPI. The index value of a quarter is compiled based on a base schedule of items and according to the tendered rates of the items in that quarter.

2. The index figures as from the 1st quarter of 1999 are to be compiled with basis on a revised base schedule of items which is duly formulated with reference to the contracts tendered in 1998, and with conversion to the common base index 100 at 1989. (The figures with asterisk are compiled based on the revised schedule of items. This allows comparable data series spliced at end of 1998.)

1. 屋宇設備投標價格指數反映建築署新建築工程的屋宇設備投標價位，它補足了不包括屋宇設備工程合約在內的建築署新建築工程投標價格指數。它首次編訂於一九八九年第四季，該季的價格數值被設定為基準數值，並以指數100作為表示。以後每季的價格數值均會與基準數值作出比較，並以指數形式表示。屋宇設備投標價格指數的計算方法，與建築署新建築工程投標價格指數所採用的方法相同；每一季的價格數值是按照一張基本項目清單內各項目的投標價格編訂而成。

2. 由一九九九年第一季起的價格指數，會按照經修訂的基本工料清單而編訂，再加以轉換到一九八九年以100為基數的同等水平，而該清單則以一九九八年投標的合約作為依據。(附表內有星號的數值是按照經修訂的基本工料清單而編訂，使到得出一套可與一九九八年數值銜接的價格指數，以便比較。)