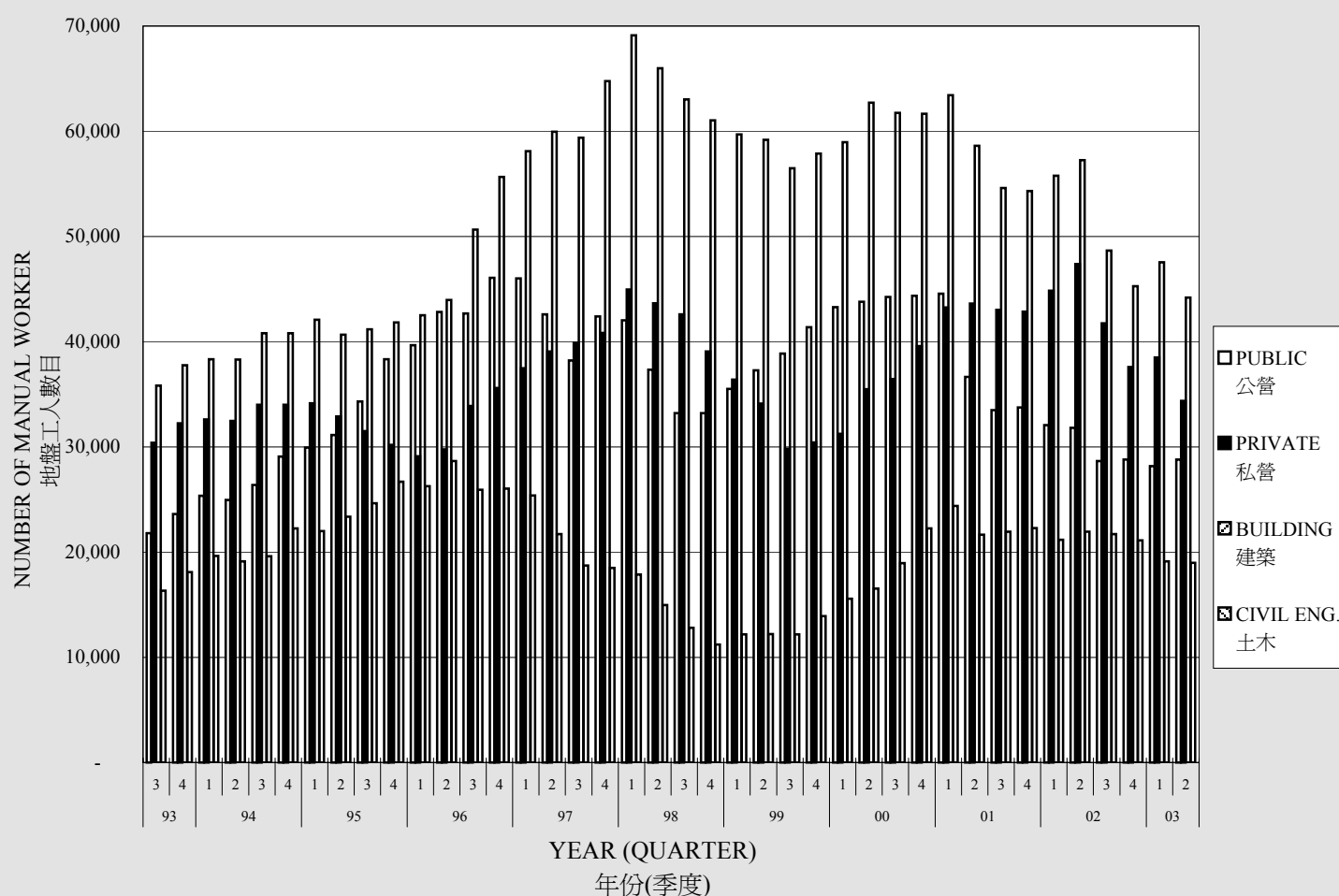


# NUMBER OF MANUAL WORKERS ENGAGED AT CONSTRUCTION SITES

## 建築地盤工人數目



YEAR 年份	QUARTER 季度	TOTAL 總數	ANALYSIS BY SECTOR 按公、私營劃分		ANALYSIS BY TYPE OF PROJECT 按工程類別劃分	
			PUBLIC 公營	PRIVATE 私營	BUILDING 建築	CIVIL ENG. 土木
			1998	3	75810	33200
	4	72253	33195	39058	61039	11214
1999	1	71899	35508	36391	59710	12189
	2	71392	37270	34122	59187	12205
	3	68683	38865	29818	56495	12188
	4	71789	41366	30423	57869	13920
2000	1	74521	43286	31235	58957	15564
	2	79261	43782	35479	62725	16536
	3	80691	44253	36438	61751	18940
	4	83924	44355	39569	61676	22248
2001	1	87813	44558	43255	63418	24395
	2	80269	36645	43624	58619	21650
	3	76524	33489	43035	54593	21931
	4	76601	33761	42840	54323	22278
2002	1	76931	32074	44857	55762	21169
	2	79193	31823	47370	57266	21927
	3	70376	28645	41731	48660	21716
	4	66393	28810	37583	45286	21107
2003	1	66675	28181	38494	47548	19127
	2	63174	28793	34381	44184	18990

The figures for the number of manual workers engaged at building and civil engineering construction sites, analysed by sector (Public and Private) or by type of project (Building and Civil Engineering) are based on the Quarterly Report of Employment and Vacancies at Construction Sites prepared by the Census and Statistics Department.

在建築及土木工程地盤工作的地盤工人數目，按公營及私營或工程類別(建築及土木)加以劃分。這些資料以政府統計處所編撰的「建築地盤就業人數及空缺季報」作為依據。