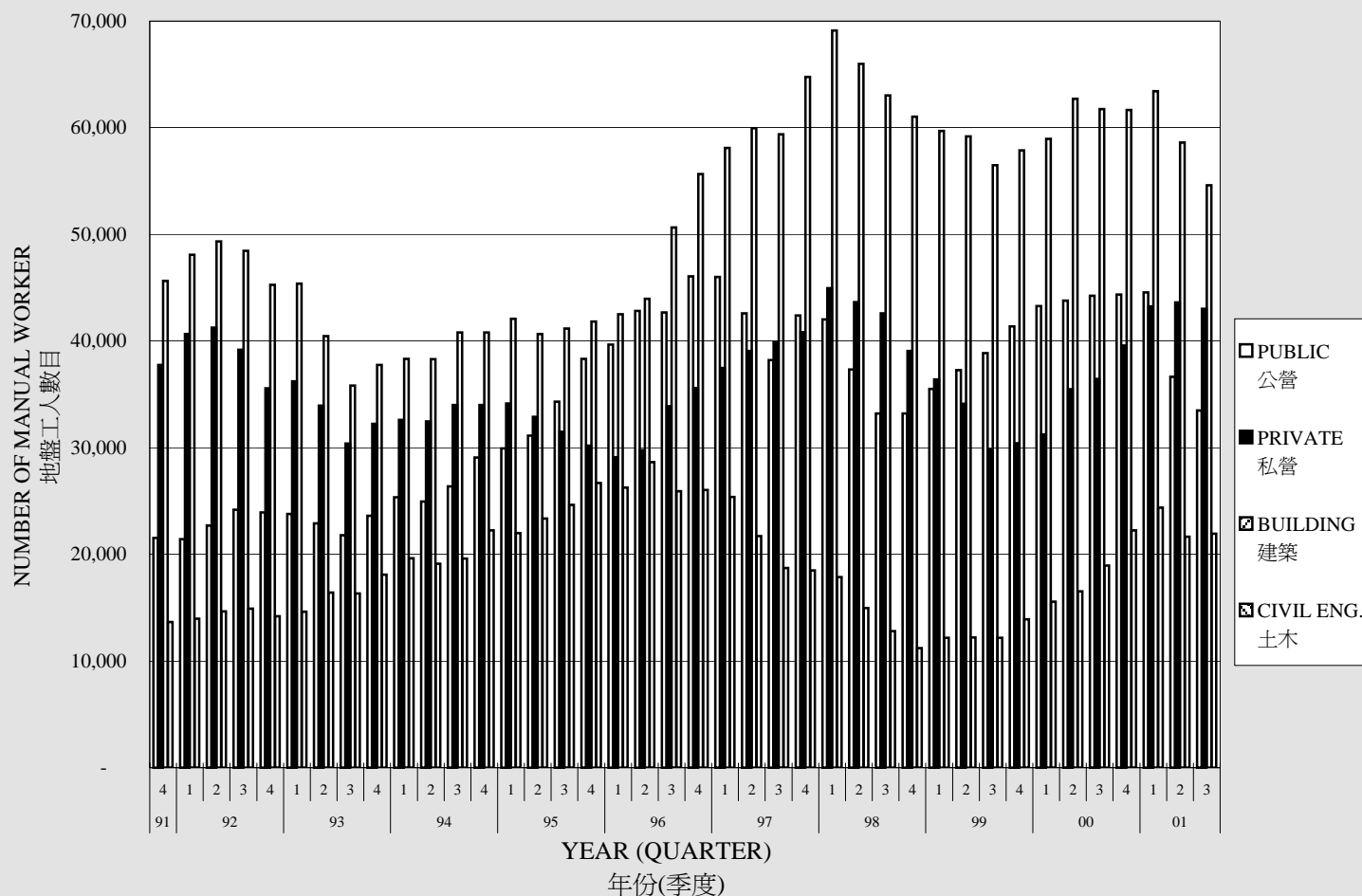


# NUMBER OF MANUAL WORKERS ENGAGED AT CONSTRUCTION SITES

## 建築地盤工人數目



| YEAR<br>年份 | QUARTER<br>季度 | TOTAL<br>總數 | ANALYSIS BY SECTOR<br>按公、私營劃分 |               | ANALYSIS BY TYPE OF PROJECT<br>按工程類別劃分 |                  |
|------------|---------------|-------------|-------------------------------|---------------|--|------------------|
|            |               |             | PUBLIC<br>公營                  | PRIVATE<br>私營 | BUILDING<br>建築                         | CIVIL ENG.<br>土木 |
|            |               |             | 1996                          | 4             | 81676                                  | 46071            |
| 1997       | 1             | 83500       | 46016                         | 37484         | 58107                                  | 25393            |
|            | 2             | 81658       | 42598                         | 39060         | 59960                                  | 21698            |
|            | 3             | 78106       | 38224                         | 39882         | 59375                                  | 18731            |
|            | 4             | 83251       | 42411                         | 40840         | 64753                                  | 18498            |
| 1998       | 1             | 86989       | 42042                         | 44947         | 69113                                  | 17876            |
|            | 2             | 80975       | 37332                         | 43643         | 66002                                  | 14973            |
|            | 3             | 75810       | 33200                         | 42610         | 63018                                  | 12792            |
|            | 4             | 72253       | 33195                         | 39058         | 61039                                  | 11214            |
| 1999       | 1             | 71899       | 35508                         | 36391         | 59710                                  | 12189            |
|            | 2             | 71392       | 37270                         | 34122         | 59187                                  | 12205            |
|            | 3             | 68683       | 38865                         | 29818         | 56495                                  | 12188            |
|            | 4             | 71789       | 41366                         | 30423         | 57869                                  | 13920            |
| 2000       | 1             | 74521       | 43286                         | 31235         | 58957                                  | 15564            |
|            | 2             | 79261       | 43782                         | 35479         | 62725                                  | 16536            |
|            | 3             | 80691       | 44253                         | 36438         | 61751                                  | 18940            |
|            | 4             | 83924       | 44355                         | 39569         | 61676                                  | 22248            |
| 2001       | 1             | 87813       | 44558                         | 43255         | 63418                                  | 24395            |
|            | 2             | 80269       | 36645                         | 43624         | 58619                                  | 21650            |
|            | 3             | 76524       | 33489                         | 43035         | 54593                                  | 21931            |

The figures for the number of manual workers engaged at building and civil engineering construction sites, analysed by sector (Public and Private) or by type of project (Building and Civil Engineering) are based on the Quarterly Report of Employment and Vacancies at Construction Sites prepared by the Census and Statistics Department.

在建築及土木工程地盤工作的地盤工人數目，按公營及私營或工程類別(建築及土木)加以劃分。這些資料以政府統計處所編撰的「建築地盤就業人數及空缺季報」作為依據。