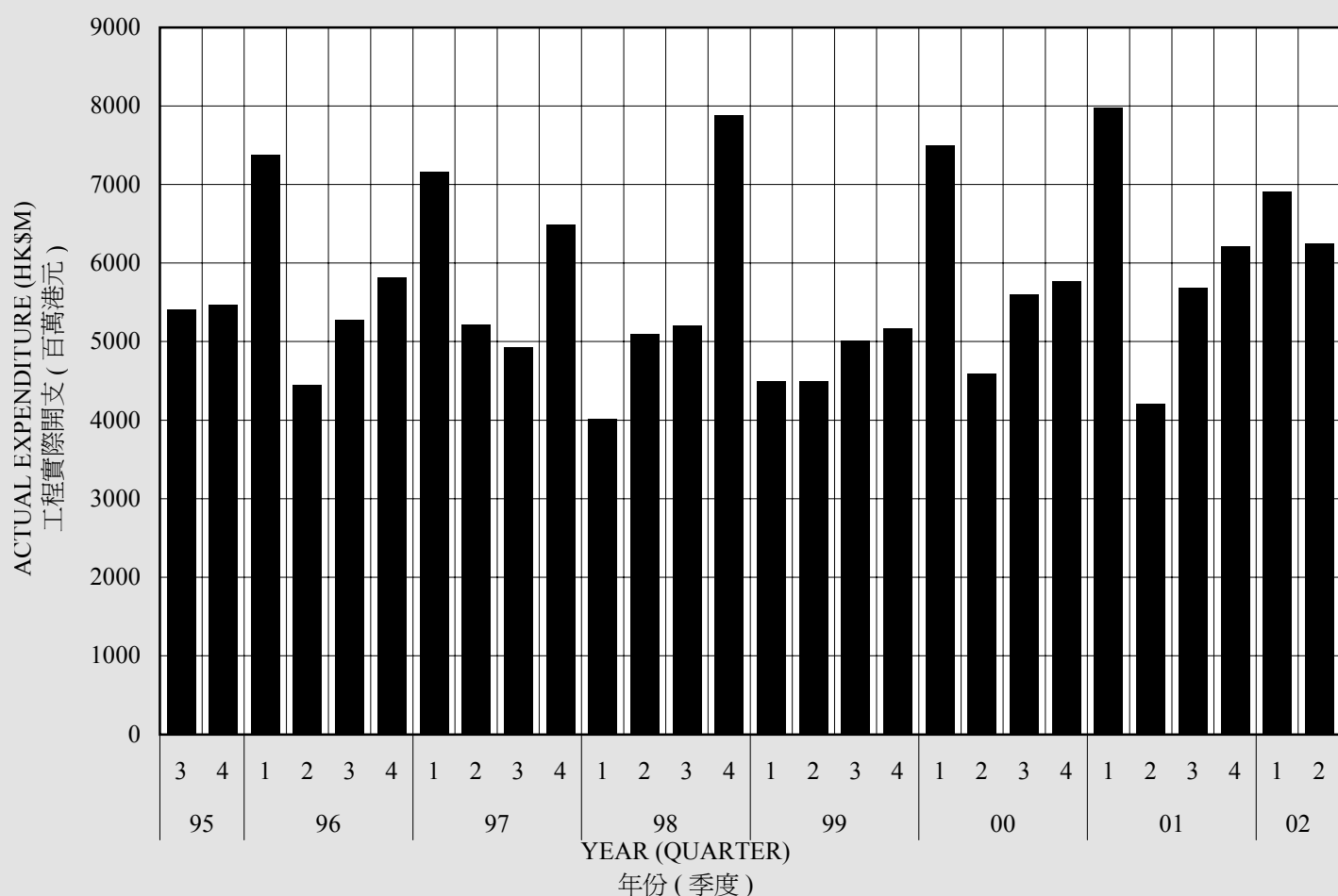


**PUBLIC WORKS PROGRAMME ACTUAL EXPENDITURE
(INCLUDING EXPENDITURE ON THE AIRPORT CORE PROGRAMME)**

工務計劃實際開支 (包括機場核心計劃的開支)



YEAR 年份	QTR 季度	WORKS 工程 (1)	PURCHASE OF PROPERTIES 購買物業 (2)	TOTAL 合共 (1)+(2)	YEAR TOTAL 全年總和
(ALL FIGURES ARE IN HK\$ MILLION) (所有數字以百萬港元為單位)					
1997	3	5,212.6	158.6	5,371.2	
	4	4,922.5	158.5	5,081.0	22,434.4
1998	1	6,484.9	310.5	6,795.4	
	2	4,016.0	221.0	4,237.0	
	3	5,096.4	16.6	5,113.0	
	4	5,200.8	8.5	5,209.3	21,354.7
1999	1	7,876.2	33.7	7,909.9	
	2	4,493.3	1.8	4,495.1	
	3	5,004.5	4.4	5,008.9	
	4	5,172.5	3.2	5,175.7	22,589.6
2000	1	7,501.7	18.7	7,520.4	
	2	4,585.5	3.5	4,589.0	
	3	5,591.5	9.1	5,600.6	
	4	5,763.7	2.4	5,766.1	23,476.1
2001	1	7,982.0	1.7	7,983.7	
	2	4,201.4	6.1	4,207.5	
	3	5,681.5	0.2	5,681.7	
	4	6,207.7	-0.5	6,207.2	24,080.1
2002	1	6,912.1	71.8	6,983.9	
	2	6,240.6	10.9	6,251.5	

The actual expenditure of the Public Works Programme excludes that of the Urban and Regional Councils and Hong Kong Housing Authority. The Works expenditure includes payments to contractors in respect of building and civil engineering works undertaken and project-related consultants' fees. Purchase of Properties refers to open market acquisition of completed properties.

工務計劃實際開支不包括市政局、區域市政局及香港房屋委員會在這方面的開支。「工程」開支包括付給承建商的建築和土木工程費用，以及與工程計劃有關的顧問費。購買物業是指在公開市場上購買已落成的物業。