



Standing Committee on Concrete Technology (SCCT)

Annual Concrete Seminar 2014

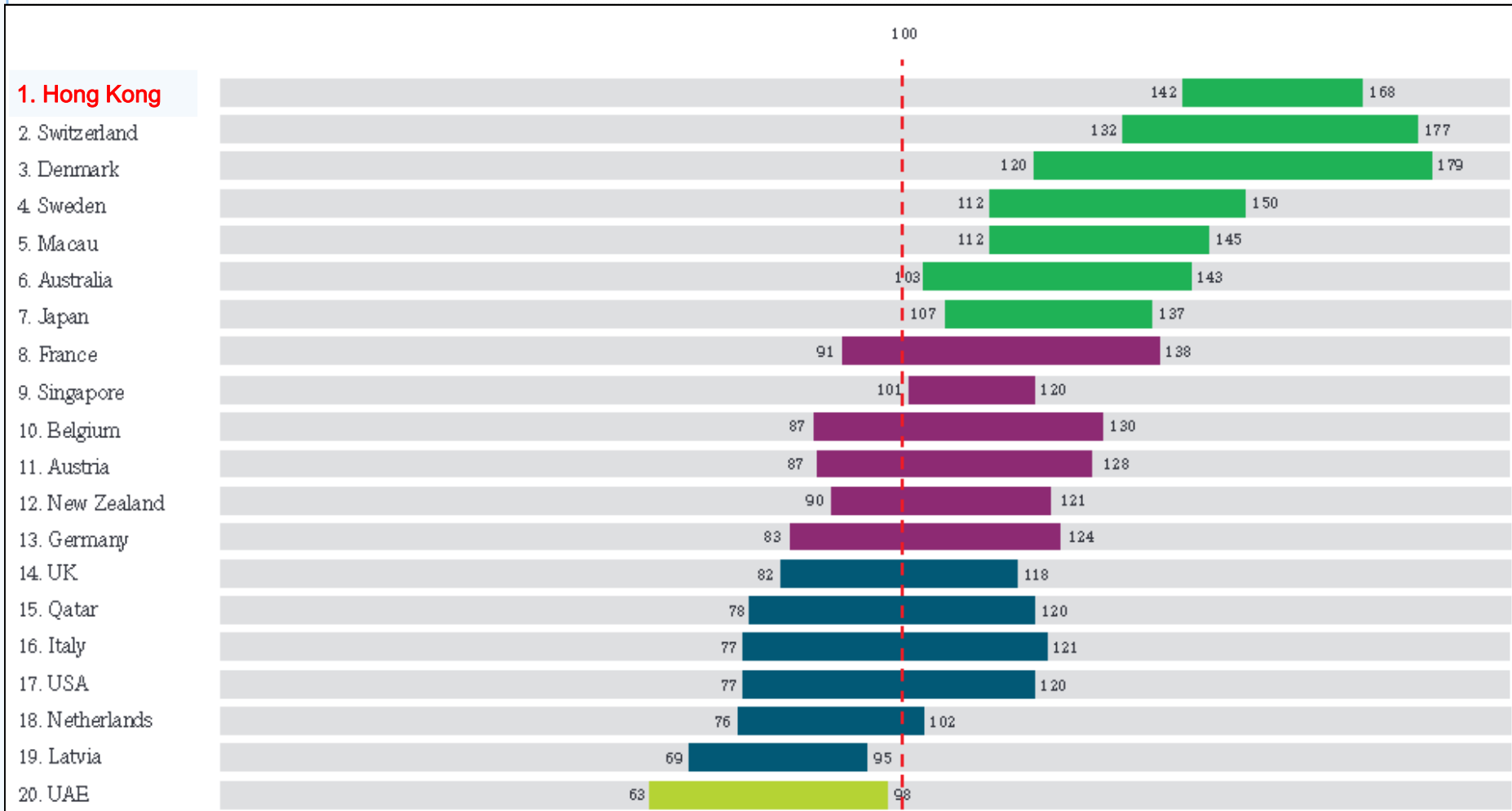
Opening Address

K. C. Lam

**Assistant Director (Technical)
Civil Engineering and Development Department
Chairman, Standing Committee on Concrete Technology**

High construction cost

- HK ranked No. 1 in 2013



Standing Committee on Concrete Technology (SCCT)

Construction Standard CS1:2010

Testing Concrete (published in Sept. 2010)

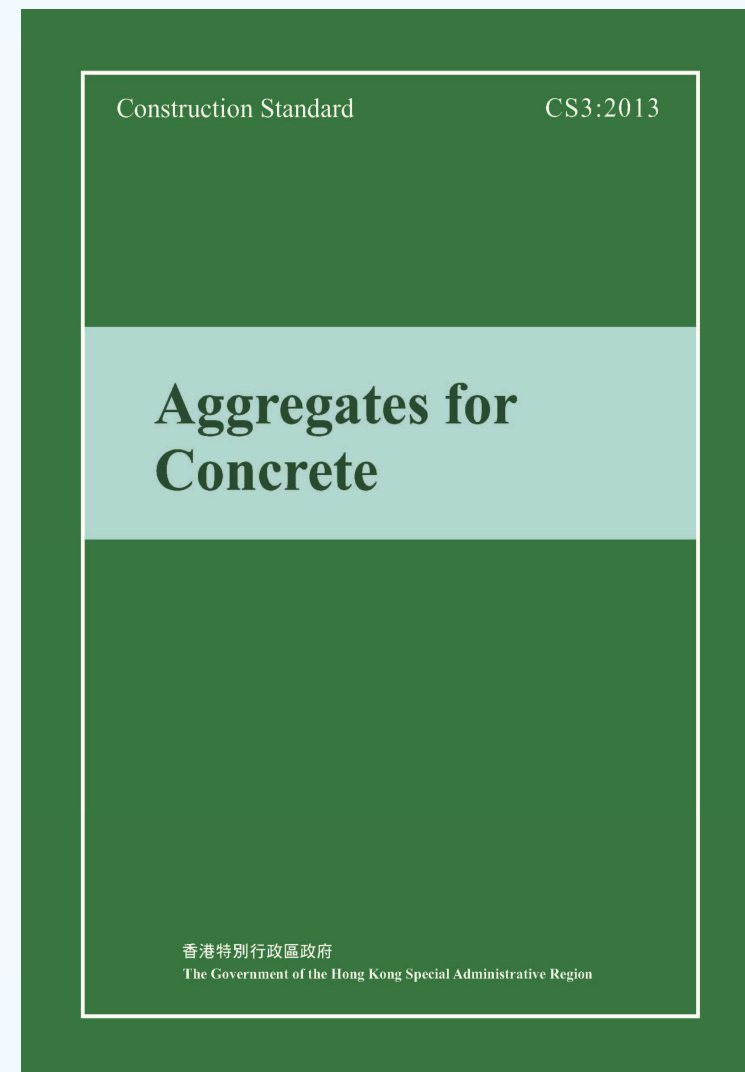
Construction Standard CS2:2012

Steel Reinforcing Bars for the Reinforcement of Concrete (published in Nov 2012)

Construction Standard CS3:2013

Aggregates for Concrete (published in May 2013)

For all public works projects to be tendered on or after the 1st day of January 2015, adoption of CS2 and CS3 will be mandatory.



Works In Progress

Feasibility Study

- **Product Certification for the Use of Steel Reinforcing Bars in Hong Kong**
- **Use of Ground Granulated Blastfurnace Slag in Concrete with Volcanic Rock as Aggregates**

Technical Study

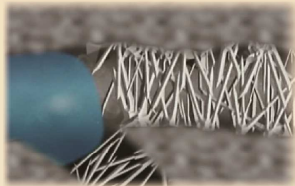
- **Better Utilization of Strength Development Characteristics of PFA/GGBS Concrete**
- **Review of the Acceptance Criterion for Concrete**

Standing Committee on Concrete Technology

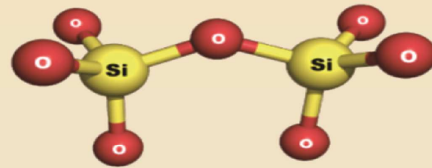
Annual Concrete Seminar 2014

29 April 2014

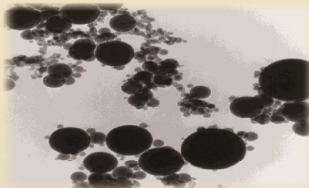
Economic and Sustainable Solutions for Concrete Construction



Crystalline Admixture



Silicate Technology



Microsilica



Galvanised Reinforcement



Multi-Pulse Sequencing System



Sacrificial Anodes

Economic and Sustainable Solutions for Concrete Construction

Annual Concrete Seminar 2014

Organising Committee

Chairman – Mr Albert Cheung (WSD)

Committee Members

- **Mr James Chu (CEDD)**
- **Mr Willy Yu (HD)**
- **Mr Daniel Lau (HyD)**
- **Mr Tony Cheung (BD)**
- **Mr Allen Siu (ArchSD)**
- **Mr Yu-tong (DSD)**
- **Mr Denis Heung (ITC)**
- **Mr CT Lam (WSD)**

A stylized landscape illustration. The background features wavy, layered bands of blue and light blue, suggesting a sky or distant mountains. In the foreground, there are rolling green hills with varying shades of green. On the left side, a small tree with a brown trunk and several rounded, overlapping leaves in shades of purple and pink stands on a hill. Below the tree, there are some orange and brown shapes that look like rocks or small bushes. The overall style is simple and artistic, with a focus on soft colors and organic shapes.

Thank You

End