

For information on
21 March 2015

LanDAC Paper No. 06/2015

LANTAU DEVELOPMENT ADVISORY COMMITTEE

Recreation and Tourism Development in South Lantau

PURPOSE

This paper aims to set out the recreation and tourism development in south Lantau for reference by the Lantau Development Advisory Committee (LanDAC).

BACKGROUND

2. South Lantau takes pride on its beautiful natural landscapes, and is also home to diverse natural habitats and rural towns, cultural and heritage attractions, as well as beautiful beaches, which have great development potentials for recreational and tourist purposes.

3. The Lantau Development Task Force formulated the Revised Concept Plan for Lantau (Concept Plan) in 2007, as shown in **Annex 1**. The Concept Plan recommends building cycle tracks / mountain bike trails and a triathlon race course in South Lantau, and implementing improvement project for the beachfront of South Lantau Coast, including turning Lower Cheung Sha Beach into a vibrant water sports centre. In addition, the "Consultancy Study on Spa and Resort Facilities" completed in 2006 also proposes the development of spa and resort facilities on the land near Lower Cheung Sha Beach.

4. At the third meeting on 19 July 2014, the LanDAC agreed on the four development directions outlined in **LanDAC Paper No. 04/2014**, one of which proposes developing most parts of Lantau Island including south Lantau for the purposes of conservation, leisure and culture, and green tourism.

PROPOSALS OF LANDAC ON RECREATION AND TOURISM DEVELOPMENT IN SOUTH LANTAU

5. Of the many development proposals/views from LanDAC Members, the proposals related to the development of recreational and tourist facilities in south Lantau are listed below:

- providing more mountain bike trails and paragliding or caravan sites, and developing Silver Mine Cave;
- creating a “waterfront leisure and entertainment area” in southern Lantau, including expanding the camp site in Pui O and developing it into a leisure area

(Translated Version)

of a “waterfront camping” theme; preserving the existing environment of Cheung Sha Upper Beach while developing Cheung Sha Lower Beach into a “hydrotherapy centre” to attract high-end consumers; setting up a “water sports centre” in Tong Fuk; enhancing the “kiteboarding” facilities in Shui Hau.

- developing “ecological tourism and exploration zones” in the country parks in Lantau, and a “wildlife zoo” in Shui Hau Peninsula;
- developing Mui Wo into a “leisure town” by preserving its traditional rural townscape, as well as developing “local music” activities, “leisure farming”, etc;
- promoting rural land rehabilitation and developing leisure hotels or Minsu guesthouses along South Lantau Road;
- developing hydrotherapy hotels, yacht clubs and water sports centres along the beach in the south;
- designing a specialised transport system for the tourism in Lantau and turning the area into a tourist hotspot in the region;
- developing Shui Hau into a super farm that incorporates a wide range of elements such as agriculture, sight-seeing, wilderness accommodation and resort, and water and extreme sports.

ONGOING STUDIES AND PROJECTS

6. With regard to recreation and tourism development in south Lantau, we are actively taking forward the following two studies and one construction project.

(1) Recreation and Tourism Development Strategy for Lantau

7. Regarding most of the areas intended for recreational and tourism use in Lantau, we will carry out a study on the strategy for recreation and tourism development in Lantau starting in March this year, which is expected to be completed in the first quarter of 2016.

8. The aim of the study is to develop a strategy for recreation and tourism development in Lantau, and to identify and recommend projects that benefit recreation/tourism development in Lantau. The scope of the study mainly covers:

- reviewing the recreation and tourism markets and developments;
- providing a planning framework that indicates the strategic roles and functions of each region;
- identifying opportunities for new and innovative recreation/tourism development;
- formulating a strategy for recreation and tourism development in Lantau;
- identifying proposals that boost recreation/tourism development in Lantau (including but not limited to the proposals and views received by the LanDAC Secretariat);
- conducting a preliminary feasibility study (including financial viability) and general technical assessment on the related proposals;
- carrying out a strategic traffic and transport assessment for the recreation and tourism development strategy; and

(Translated Version)

- carrying out stakeholder consultation/engagement activities for the recreation and tourism development strategy and the recommended proposals.

(2) Preliminary Feasibility Study on the Extension of Cable Car System from Ngong Ping to Tai O, and Spa and Resort Development at Cheung Sha and Soko Islands

9. We are preparing the tender document for the above study, which is planned to commence in June this year, and will be completed around second quarter of 2016.

10. The scope of the study mainly covers:

- The preliminary feasibility study on the extension of cable car system from Ngong Ping to Tai O, (see **Annex 2** for the study area) covers assessment of the cable car system (route plan, aerial ropeway system, garage, maintenance workshops, control centre, etc), and the expansion or reprovisioning of infrastructure in Ngong Ping and Tai O. The study will conduct a preliminary technical assessment on the aspects of proposed structures, environment and ecology, supporting transport arrangement/facilities, land use planning, electrical and mechanical, and finance. In addition, the study will assess the financial viability of operating the cable car system, including recommendation of the proposed development option and schedule, and exploration of further optimizing the Tai O revitalisation plan to facilitate this project. This study aims at exploring/formulating a development proposal for a safe, efficient, reliable and environmentally and commercially viable cable car system.
- The preliminary feasibility study on the development of spa and resort at Cheung Sha and Soko Islands (see **Annexes 3 and 4** for the study area) includes establishing the market positioning for such developments, and proposing the development scale of the spa resort, hotel benchmarking and value enhancing clustering facilities. The study will conduct a preliminary technical assessment on the aspects of proposed structures, environment and ecology, supporting transport arrangement/facilities, land use planning, electrical and mechanical, and finance. In addition, the study will assess the financial viability of running the spa resort and other value enhancing clustering facilities and the proposed development programme. This study aims at exploring/formulating a spa and resort development proposal that is environmentally and commercially viable.

11. When the staged results of the above two studies are available, we will report them to the LanDAC and its related subcommittees.

(3) Mountain Bike Trail Network in South Lantau

12. The Civil Engineering and Development Department (CEDD) is making effort to implement the construction of new facilities in south Lantau in order to

(Translated Version)

improve the existing mountain bike trail network.

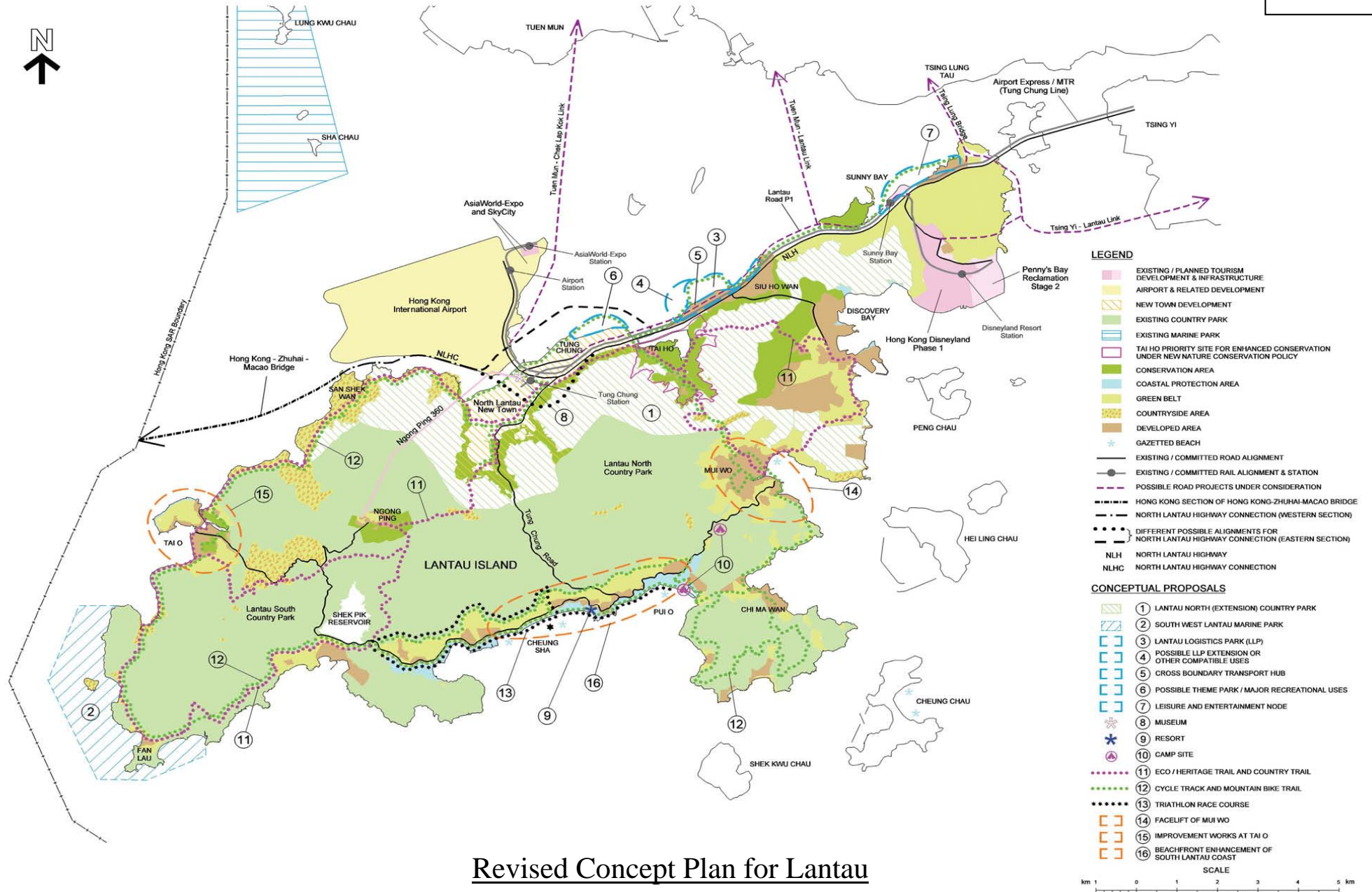
13. The construction works will be carried out in two phases:

- The first phase (**Annex 5**) will commence in the fourth quarter of this year, and will be completed by the end of 2016. The works include: (1) improving the existing mountain bike trails from Mui Wo to Pui O, Pui O to Kau Ling Chung, and the mountain bike trail in Chi Ma Wan; and (2) improving the entrance to Chi Ma Wan Country Trail as a gathering place for mountain cyclists, and providing simple supporting facilities such as information boards.
- The second phase (**Annex 6**) will commence by the end of 2016, and will be completed by end 2017. The works include: (1) building a new training ground comprising tracks for various skill levels near Lai Chi Yuen Tsuen; (2) developing new trails, including those from Mui Wo Trail to the new training ground, Chi Ma Wan Trail to Shap Long Chung Hau, and connecting the eastern and western ends of Chi Ma Wan Trail; and (3) improving the east starting point of the mountain bike trail from Mui Wo to Pui O as a gathering place.

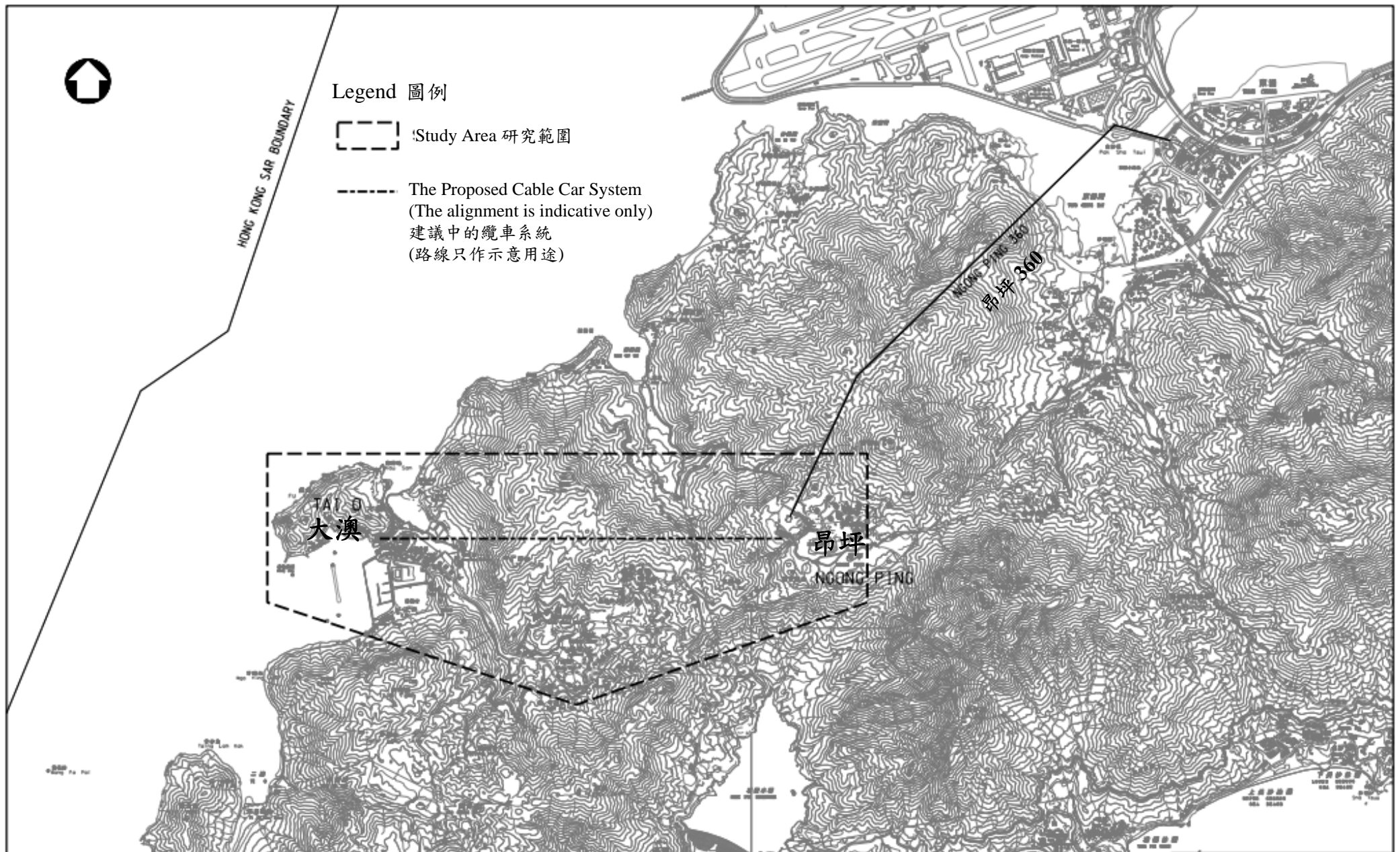
CONCLUSION

14. Members are invited to note and express their views on the recreation and tourism development in south Lantau.

Development Bureau
March 2015



Revised Concept Plan for Lantau



(Translated Version)

The Preliminary Feasibility Study on the Development of Spa and Resort at Cheung Sha and Soko Islands
– Study Area (Cheung Sha)

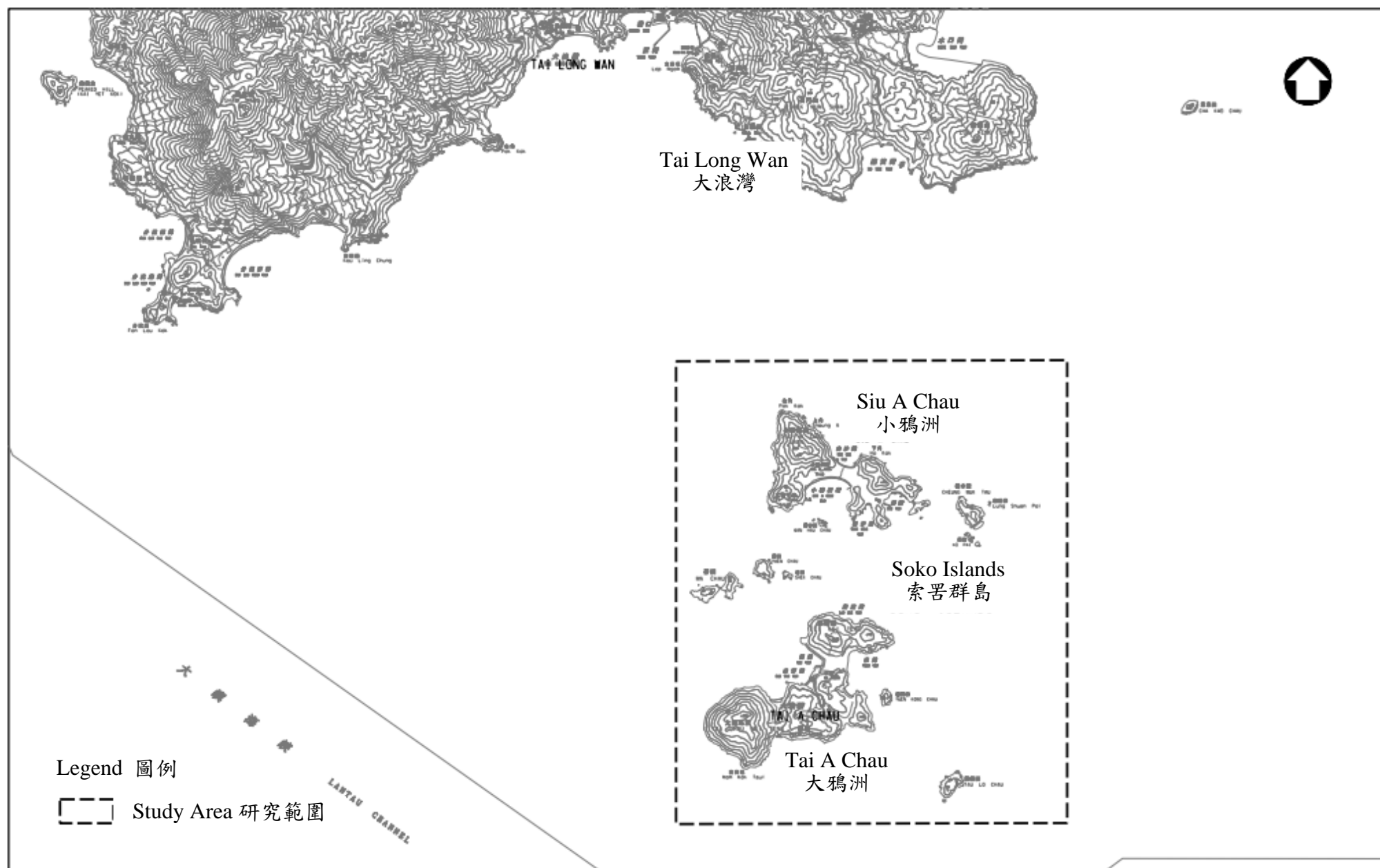
Annex 3



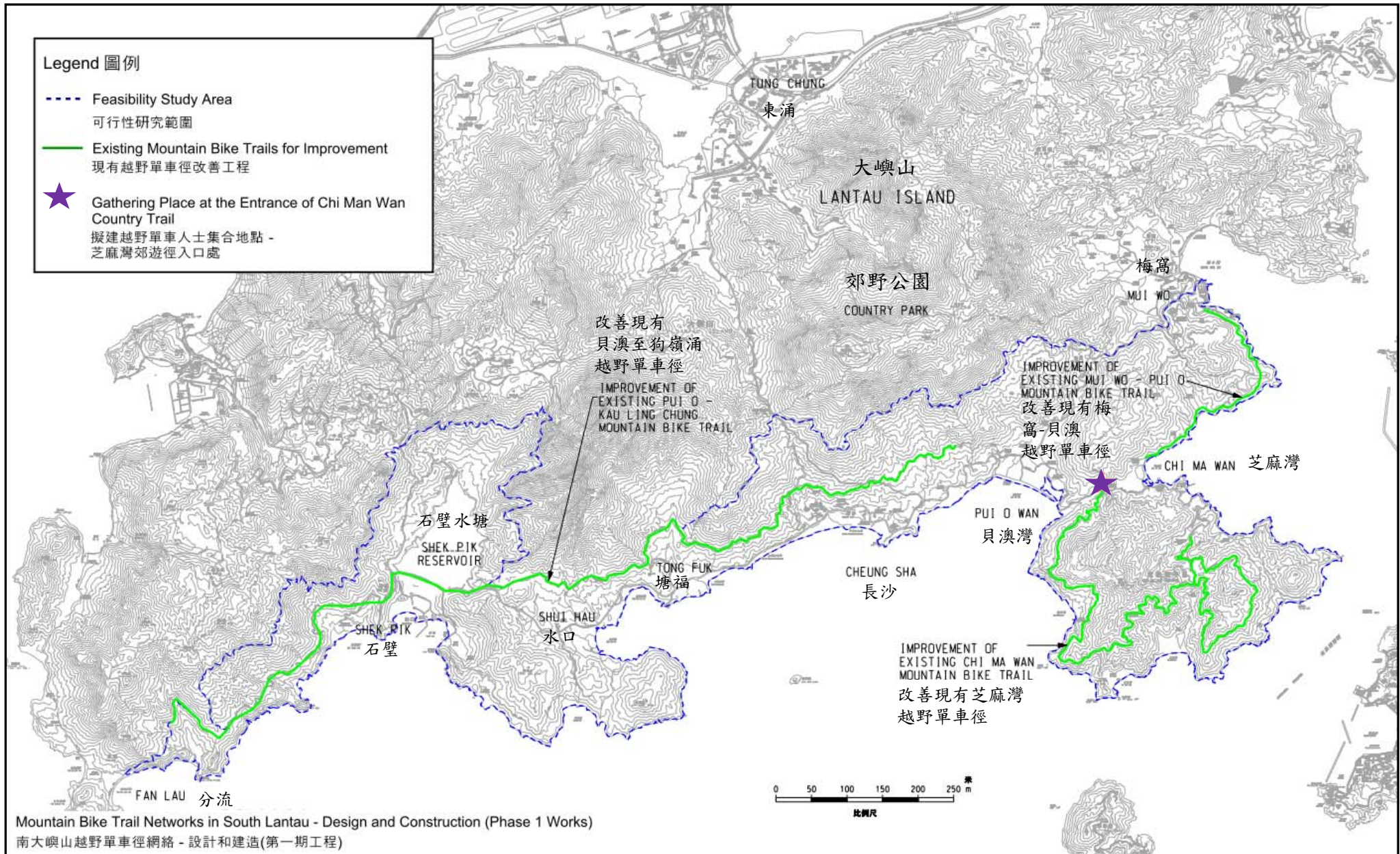
(Translated Version)

The Preliminary Feasibility Study on the Development of Spa and Resort at Cheung Sha and Soko Islands
– Study Area (Soko Islands)

Annex 4



Mountain Bike Trail Networks in South Lantau – Phase 1 Works



Mountain Bike Trail Networks in South Lantau – Phase 2 Works

Annex 6

