

## Penny's Bay Development Project Fire Station, Ambulance Depot and Police Post - "Green Architecture"

Architectural Services Department and Gammon Construction Limited have completed the above to serve the surrounding areas in Penny's Bay, Lantau and the theme park. Construction commenced in late 2002 and completed on schedule in September 2004. The contract sum is \$160 million approximately. The works form part of Civil Engineering Development Department's project for infrastructure development in Penny's Bay.

Good planning at the initial stage allowed a better site configuration to suit the special functional needs. Key design objectives were to comply with the 15m building height restriction while developing a sustainable design using a "garden architecture theme", and to minimise the visual impact in relation to the theme park by reducing the mass of the buildings thus creating neat roofscapes. The low rise development required a deep plan approach for the main fire service building therefore to maximise the use of daylight, a central landscaped courtyard was created which fits well with the garden theme.

The complex consists of a 7-bay fire appliance building contained within a light and airy single-storey structure utilizing photovoltaic panels integrated as part of the roof. This has the double benefits of natural light and ventilation whilst generating renewable solar energy. Adjacent to the appliance bay are offices, barracks and ancillary accommodation contained within a two-storey building with a central landscaped courtyard. A separate four-storey practice centre enables confined space, height and ladder practice. A central utility building shares electrical and mechanical plants. The single-storey Police Post is individually expressed at the east side of the complex.

Natural materials are recreated through prefabricated columns, latticework, roof support brackets, artificial stone walls and paving materials. Environmental features achieve high sustainability including, maximization of the use of daylight, natural ventilation and renewable energy, achieving higher energy efficiency by low overall thermal transfer value of 12.64W/m<sup>2</sup> through the roof overhang design, landscaping, the use of prefabricated and environmental friendly materials and use of rainwater recycling for vehicle washing and irrigation. The partnering spirit among all those involved enabled the smooth completion project.

## 竹篙灣發展計劃 消防局暨救護站及警崗 - 《綠化建築》

建築署與金門建築有限公司已經完成一項座落於大嶼山竹篙灣的綜合設施基建工程，該設施包括一所消防局暨救護站和一所警崗，用以提供該區和將來迪士尼主題公園所需的緊急服務。建築工程於二零零二年底展開，並於二零零四年九月準時竣工。這項工程是土木工程拓展署所負責的竹篙灣基建發展計劃內的一部份，建築工程費用約為一億六千萬港元。

在策劃工程的初段，工地的位置及樓房的佈置均經過悉心的規劃，配合將來消防局和警崗在運作上的需要。在設施的設計上，主要要達到的指標是所有樓房的高度均需符合在發展規劃中規定不可超過十五米的高度限制，並在園林建築的主題下加入可持續發展的設計，利用整齊雅致的樓頂佈置，減少大型綜合設施對附近景觀的影響。低層建築的設計促使在主消防大樓內設置綠化的中庭，從而配合園林設計的主題，而室內則可引入更多自然光，達到環保的目的。

竹篙灣消防局暨救護站的設施，包括一座有七個停車間間隔的單層建築物，它的屋頂是由光電太陽能板合成構造，一方面可引入更多的天然光線及自然通風，另一方面則可提供再生能源。停車間旁設有一座兩層高配有優美園景中庭的主消防大樓，以作辦公室、休息室等用途。在消防局內的露天操場，亦興建有一座四層高的訓練大樓，作為前線消防員進行密閉空間、救火梯等練習用途。共用設施如發電機等則設於中央的設備樓。位處於綜合設施東面的竹篙灣警崗是一座單棟式單層建築物，融合於綜合設施的整體設計。

大樓採用了預製支柱、格子組件、屋頂托架、人做石牆及鋪路物料來減少資源浪費。綜合設施具備有可持續發展的特點，包含促進環保的設計概念及不同種類的環保裝置，包括採用露天中庭的大樓設計，使日光能盡量透射入室內、盡量引入自然通風、在屋頂內裝置太陽能發電板，提供再生能源、樓房外牆的設計達到低傳熱系數至 12.64 瓦特/平方米、在設施內大量栽種各色各樣的樹木及加入園藝設計、採用環保物料及預製組件、在屋頂設置雨水收集循環系統，利用雨水作一般灌溉及洗車用途等。此項目得以順利完成全有賴各方面的充份合作。



# WORKS DIGEST

## 工務專刊

A QUARTERLY PUBLICATION OF KEY CONSTRUCTION STATISTICS  
AND TOPICAL REPORTS ON CONSTRUCTION IN HONG KONG

內容包括本港建造業的主要統計資料和專題報告

# 工務專刊

# Works Digest

## 目錄

## CONTENTS

Forecast of Consultancies  
顧問研究預報

Forecast of Invitations to Tender  
招標預報

Public Works Programme Actual Expenditure  
工務計劃實際開支

Key Construction Statistics  
建造業主要統計資料

歡迎讀者就工務專刊的形式和內容提供意見，請以書面寄交香港花園道美利大廈12樓環境運輸及工務局專業事務組。  
(傳真號碼：25219682，電子郵件地址：[psunit@etwb.gov.hk](mailto:psunit@etwb.gov.hk))

Readers' views are most welcome on the form and content of the Works Digest.  
Please write to the Professional Services Unit, Environment, Transport and Works Bureau,  
12/F Murray Building, Garden Road, Hong Kong.  
(Faxline No. 25219682, Email address: [psunit@etwb.gov.hk](mailto:psunit@etwb.gov.hk))

# CONTENTS 目錄

PWP Item No. 工程 編號	Title & Description of Assignment 工程名稱及說明	Type of Agreement 合約類別	Date of Inviting Expression of Interest 邀請建議書日期	Expected Duration 預計所需時間	Name and Tel. No. of Contact Person 聯絡人姓名及電話
<b>Architectural Services Department</b> <b>建築署</b>					
-	Reprovisioning of Cremators at Wo Hop Shek Crematorium 和合石火葬場重建工程	Architectural Lead Consultants 建築總顧問	Mar 2005 2005 年 3 月	60 months 60 個月	Mr. Raymond Leung 梁家富先生 2867 4359
-	Construction of District Open Space in Area 40A, Tseung Kwan O 將軍澳第 40 甲區的地區休憩用地工程	Architectural Lead Consultants 建築總顧問	Jan 2005 2005 年 1 月	48 months 48 個月	Mrs. M. H. Nicolson 張美馨女士 2867 4193
-	Construction of Sham Shui Po Park Stage 2 深水埗公園第二階段工程	Architectural Lead Consultant 建築總顧問	Jan 2005 2005 年 1 月	48 months 48 個月	Mr. W. K. Fan 范永光先生 2867 3783
-	Construction of Local Open Space in Area 16 (Yau Oi South) Tuen Mun 鄰舍休憩用地工程，屯門十六區(友愛南)	Architectural Lead Consultants 建築總顧問	Jan 2005 2005 年 1 月	44 months 44 個月	Mr. W.Y. Chan 陳偉人先生 2867 3740
-	Redevelopment of Victoria Park Swimming Pool Complex 維多利亞公園游泳池重建工程	Architectural Lead Consultants 建築總顧問	Feb 2005 2005 年 2 月	60 months 60 個月	Mr. W.Y. Chan 陳偉人先生 2867 3740
-	Re-location of the Labour Tribunal to the South Kowloon Law Courts Building at 36 Gasgoine Road, Yaumatei, Kowloon 搬遷勞資審裁處到南九龍裁判法院大樓，九龍油麻地加士居道 36 號	Architectural Lead Consultant 建築總顧問	Jan 2005 2005 年 1 月	43 months 43 個月	Mr. Patrick Hau 侯漢輝先生 2867 3472
-	Construction of District Open Spaces in Area 40A, Tseung Kwan O 將軍澳第 40 甲區的地區休憩用地工程	Quantity Surveying 工料測量	May 2005 2005 年 5 月	48 months 48 個月	Mr. K. S. Shum 岑共社先生 2867 3605
-	Construction of Local Open Space Area 16 (Yau Oi South) Tuen Mun 鄰舍休憩用地工程，屯門十六區(友愛南)	Quantity Surveying 工料測量	May 2005 2005 年 5 月	44 months 44 個月	Mr. K. S. Shum 岑共社先生 2867 3605
-	Construction of Sham Shui Po Park Stage II 深水埗公園第二期工程	Quantity Surveying 工料測量	Jun 2005 2005 年 6 月	48 months 48 個月	Mr. K. S. Shum 岑共社先生 2867 3605
-	Redevelopment of Victoria Park Swimming Pool Complex 維多利亞公園游泳池重建工程	Quantity Surveying 工料測量	Jun 2005 2005 年 6 月	60 months 60 個月	Mr. K. S. Shum 岑共社先生 2867 3605

PWP Item No. 工程 編號	Title & Description of Assignment 工程名稱及說明	Type of Agreement 合約類別	Date of Inviting Expression of Interest 邀請建議書日期	Expected Duration 預計所需時間	Name and Tel. No. of Contact Person 聯絡人姓名及電話
<b>Civil Engineering and Development Department</b> <b>土木工程拓展署</b>					
-	10-year Extended Landslip Preventive Measures Project, Phase 6, Package C Stability Studies of Private Slopes - Investigation 延續十年的防止山泥傾瀉計劃 第 6 期C組私人斜坡的安全篩選 - 勘測	I 勘測	Feb 2005 2005 年 2 月	30 months 30 個月	Mr. K C IP 葉家熾先生 2762 5050
-	10-year Extended Landslip Preventive Measures Project, Phase 6, Package D Landslip Preventive Works on Government Slopes and Related Studies - Investigation, Design and Construction 延續十年的防止山泥傾瀉計劃 第 6 期 D 組 政府斜坡的防止山泥傾瀉工程及相關研究 - 勘測、設計及建造	DC 設計及建造	Feb 2005 2005 年 2 月	60 months 60 個月	Dr T S K LAM 林兆強先生 2760 5773
-	Landscape Design Services for Local Open Space in Area 44 and Seven Roundabouts in Tseung Kwan O 將軍澳第44區地區遊憩用地及七個迴旋處的園林設計計劃	DC 設計及建造	Mar 2005 2005 年 3 月	24 months 24 個月	Mr. C S LAU 劉仲誠先生 2301 1399
-	10-year Extended Landslip Preventive Measures Project, Phase 6, Package E Landslip Preventive Works on Government Slopes and Related Studies - Investigation, Design and Construction 延續十年的防止山泥傾瀉計劃 第6期E組 政府斜坡的防止山泥傾瀉工程及相關研究 - 勘測、設計及建造	DC 設計及建造	Mar 2005 2005 年 3 月	60 months 60 個月	Mr. K M LUK 陸國文先生 2762 5082
-	10-year Extended Landslip Preventive Measures Project, Phase 6, Package F Landslip Preventive Works on Government Slopes and Related Studies - Investigation, Design and Construction 延續十年的防止山泥傾瀉計劃 第6期F組 政府斜坡的防止山泥傾瀉工程及相關研究 - 勘測、設計及建造	DC 設計及建造	Apr 2005 2005 年 4 月	60 months 60 個月	Dr T S K LAM 林兆強先生 2760 5773

PWP Item No. 工程 編號	Title & Description of Assignment 工程名稱及說明	Type of Agreement 合約類別	Date of Inviting Expression of Interest 邀請建議書日期	Expected Duration 預計所需時間	Name and Tel. No. of Contact Person 聯絡人姓名及電話
<b>Civil Engineering and Development Department</b> <b>土木工程拓展署</b>					
-	10-year Extended Landslip Preventive Measures Project, Phase 6, Package G Landslip Preventive Works on Government Slopes and Related Studies - Investigation, Design and Construction 延續十年的防止山泥傾瀉計劃 第 6 期 G 組 政府斜坡的防止山泥傾瀉工程及相關研究 - 勘測、設計及建造	DC 設計及建造	May 2005 2005 年 5 月	60 months 60 個月	Mr. K M LUK 陸國文先生 2762 5082
-	Feasibility Study for Remaining Development in Tung Chung 東涌餘下發展計劃的可行性研究	FS 可行性研究	Jun 2005 2005 年 6 月	18 months 18 個月	Ms. Wendy IU 姚慧燕女士 2231 4422
<b>Drainage Services Department</b> <b>渠務署</b>					
-	Harbour Area Treatment Scheme (HATS) – provision of disinfection facilities at Stonecutters Island sewage treatment works environmental impact assessment study 淨化海港計劃—擬在昂船洲污水處理廠加建的消毒設施對環境影響評估的研究	FS (EIA Study) 可行性研究 (環境影響評估)	Jan 2005 2005 年 1 月	9 months 9 個月	Mr. K M HO 何啓明先生 2834 9421
4222DS	Construction of Tai Po sewage treatment works stage 5 phase 1 – environmental monitoring and audit for construction and operation phase 大埔污水處理廠第五階段第一期擴建工程—施工及營運階段的環境監察與審核	I (EM&A) 勘查研究 (環境監察與審核)	Jan 2005 2005 年 1 月	90 months 90 個月	Mr. H S KAN 簡漢成先生 2594 7502
4329DS	Upgrading of Pillar Point sewage treatment works 望后石污水處理廠改善工程	IDC 勘測研究、 設計及建造	Feb 2005 2005 年 2 月	95 months 95 個月	Mr. K L TSANG 曾國良先生 2834 9438
4203DS	North District sewerage, stage 2 (part 1) – design and construction 北區污水收集系統第 2 階段(第 1 部分)—設計及建造	D&C 設計及建造	Apr 2005 2005 年 4 月	90 months 90 個月	Mr. Y F KAN 簡炎輝先生 2594 7031
4103CD	Drainage improvement in Northern Hong Kong Island - Hong Kong West drainage tunnel – design and construction 港島北部雨水排放系統改善計劃—港島西雨水排放隧道—設計及建造	D&C 設計及建造	Jun 2005 2005 年 6 月	95 months 95 個月	Mr. W C IP 葉永祥先生 2594 7253

PWP Item No. 工程 編號	Title & Description of Assignment 工程名稱及說明	Type of Agreement 合約類別	Date of Inviting Expression of Interest 邀請建議書日期	Expected Duration 預計所需時間	Name and Tel. No. of Contact Person 聯絡人姓名及電話
<b>Drainage Services Department</b> <b>渠務署</b>					
4104CD	Drainage improvement in Northern Hong Kong Island - lower catchment – design and construction 港島北部雨水排放系統改善計劃—下游集水區—設計及建造	D&C 設計及建造	Jun 2005 2005 年 6 月	101 months 101 個月	Mr. W C IP 葉永祥先生 2594 7253
4108CD	Lai Chi Kok transfer scheme – design and construction 荔枝角雨水轉運計劃—設計及建造	D&C 設計及建造	Jun 2005 2005 年 6 月	93 months 93 個月	Mr. Y F KAN 簡炎輝先生 2594 7031
<b>Environmental Protection Department</b> <b>環境保護署</b>					
-	South East New Territories Landfill Extension – Feasibility Study 新界東南堆填區擴建工程可行性研究	Feasibility & EIA Study 可行性及環境影響評估研究	Feb 2005 2005 年 2 月	18 months 18 個月	Mr. Wessex LAU 劉榮輝先生 2872 1753
-	Study on the Extension of Sha Tin Transfer Station 沙田廢物轉運站延續發展研究	FS 可行性研究	Apr 2005 2005 年 4 月	10 months 10 個月	Mr. C F WONG 黃傳輝先生 2872 1752
<b>Highways Department</b> <b>路政署</b>					
-	Upgrading / Improvement of Roadside Slopes / Retaining Walls on Hong Kong Island (2005 to 2008 Programme) – Investigation, Design and Construction 改善/加固港島區路旁斜坡/護土牆工程 – 2005至2008年計劃	I, D & C 勘察研究、設計及建造	Jan 2005 2005 年 1 月	38 months 38 個月	Mr. C.M. TANG 鄧志明先生 3188 3322
-	Reconstruction and Improvement to Tuen Mun Road – Detailed Design and Construction 屯門公路重建及改善工程 – 詳細設計及建造	D & C 設計及建造	Mar 2005 2005 年 3 月	15 months 15 個月	Mr. S.C. WONG 黃紹全先生 2762 3666



PWP Item No. 工程 編號	Title & Description of Assignment 工程名稱及說明	Type of Agreement 合約類別	Date of Inviting Expression of Interest 邀請建議書日期	Expected Duration 預計所需時間	Name and Tel. No. of Contact Person 聯絡人姓名及電話
<b>Planning Department</b> <b>規劃署</b>					
-	Cross-boundary Travel Survey 2005 二零零五年跨界旅運統計調查	Survey 調查 Open Tender 公開招標	May 2005 2005 年 5 月	12 months 12 個月	Mr. Paul TSO 曹家豪先生 2231 4681
-	Survey on Propensity to use Private Car to Cross the Boundary 使用私家車作跨界旅運的傾向調查	Survey 調查 Open Tender 公開招標	May 2005 2005 年 5 月	8 months 8 個月	Ms. F F YING 應芬芳女士 2231 4682
-	Area Improvement Study for Mong Kok (Proposed) 旺角地區改善計劃 (擬議)  To employ consultants to conduct a comprehensive study on Mongkok with a view to drawing up an Area Improvement Plan for the district. 將委聘顧問進行旺角區的全面研究並制 定整體地區改善計劃。	Planning Study 規劃研究	Jun 2005 2005 年 6 月	24 months (excluding time required for public consultation) 24 個月 (不包括公眾 諮詢所須的時 間)	Mr. J.J. AUSTIN 何盛田先生 2231 4662
<b>Transport Department</b> <b>運輸署</b>					
-	Screenline Survey of Bus Services along Nathan Road 彌敦道巴士服務調查	I 調查	Jan 2005 2005 年 1 月	12 months 12 個月	Mr. Peter Wong 黃豪先生 2399 2484
-	Study on Impact of Tung Chung Cable Car Link on Bus Services in Lantau 東涌吊車發展計劃對大嶼山巴士服務影 響的研究	FS 可行性研究	Jan 2005 2005 年 1 月	3 months 3 個月	Mr. HO Ka-fai 何家輝先生 2294 2629
<b>Water Supplies Department</b> <b>水務署</b>					
-	Replacement and Rehabilitation of Water Mains, Stage 2, - Mains in New Territories West - Investigation, Design and Construction 更換及修復水管工程第 2 階段 - 新界西水管工程 - 勘察研究、設計及建造	I&DC 勘察研究、設 計及建造	Jan 2005 2005 年 1 月	80 months 80 個月	Mr. K. H. WONG 黃國雄先生 2634 3500

PWP Item No. 工程 編號	Title & Description of Assignment 工程名稱及說明	Type of Agreement 合約類別	Date of Inviting Expression of Interest 邀請建議書日期	Expected Duration 預計所需時間	Name and Tel. No. of Contact Person 聯絡人姓名及電話
<b>Water Supplies Department</b> <b>水務署</b>					
-	Replacement and Rehabilitation of Water Mains, Stage 2, - Mains on Hong Kong and Islands - Investigation, Design and Construction 更換及修復水管工程第 2 階段 - 香港島及離島水管工程 - 勘察研究、設計及建造	I&DC 勘察研究、設計及建造	Mar 2005 2005 年 3 月	68 months 68 個月	Mr. K. H. WONG 黃國雄先生 2634 3500
-	Improvement to Hong Kong Central Mid-level and High Level Areas Water Supply - Remaining Works - Design and Construction 港島中區半山及高地供水系統改善工程 - 餘下工程 - 設計及建造	DC 設計及建造	Mar 2005 2005 年 3 月	66 months 66 個月	Mr. K. H. WONG 黃國雄先生 2634 3500
-	Replacement and Rehabilitation of Water Mains, Stage 2, - Mains in New Territories East - Investigation, Design and Construction 更換及修復水管工程第 2 階段 - 新界東水管工程 - 勘察研究、設計及建造	I&DC 勘察研究、設計及建造	Jun 2005 2005 年 6 月	74 months 74 個月	Mr. K. H. WONG 黃國雄先生 2634 3500
-	Replacement and Rehabilitation of Water Mains, Stage 2, - Mains in Kowloon - Investigation, Design and Construction 更換及修復水管工程第 2 階段 - 九龍水管工程 - 勘察研究、設計及建造	I&DC 勘察研究、設計及建造	Jun 2005 2005 年 6 月	74 months 74 個月	Mr. C. H. NG 吳志豪先生 2829 5655

# CONTENTS 目錄

7. The following abbreviations are used in the Forecast.  
預報採用下列的省略符號：

Abbreviations 省略符號

ACP	Airport Core Projects 機場核心工程
AIR	Air-conditioning Installation 空調裝置
AUDI	Audio Electronics Installation 音響裝置
BD	Buildings 建築
BEAR	Supply and Installation of Bearings for Highway Structures 供應及安裝路橋結構的支承座
BITU	Supply of Bituminous Pavement Materials and Construction of Special Bituminous Surfacing 瀝青鋪面物料的供應及特別瀝青路面的建造
BRI	Broadcast Reception Installations 廣播接收裝置
BURG	Burglar Alarm and Security Installation 防盜及保安裝置
CKE	Commercial Kitchen Equipment 商用廚房設備
COAE	Broadcast Reception Installation 廣播接收裝置
COKI	Catering Equipment Installation 廚房用具裝置
DBO	Design, Build & Operate 設計、建築及運作
DEMO	Demolition of Various of Structures 各類建築物的清拆
DIES	Diesel Generator Installation 柴油發電機裝置
DSC	Domestic Sub-contract 承建商自選的分包商
ELEC	Electrical Installation 電氣裝置
ELME	Electrical and Mechanical Installation for Sewage Treatment and Screening Plants 污水處理廠及隔篩廠機電裝置
ELTI	Electronics Timing and Display Installation 電子計時及顯示裝置
EXPA	Supply and Installation of Expansion Joints for Highway Structures 供應及安裝路橋結構的伸縮縫
FABS	Fabrication of Steel Pipe Specials 特別鋼管的製造
FABU	Fabrication of Unfired Pressure Vessels 無火壓力容器的製造
FIRE	Fire Service Installation 消防裝置
FOUN	Fountain Installation 噴水池裝置
GAS	Liquefied Petroleum Gas Installation 石油氣裝置
GLAS	Design, Manufacture and Installation of Glass (or Fibre) Reinforced Plastic Units 設計、製造及安裝玻璃(或其他) 纖維強化塑料構件
GROU	Ground Investigation Field Work 場地勘探工程
INDU	Industrial Type Electrical Installation 工業用途電氣裝置
LAND	Land, Engineering and Hydrographic Survey Services 土地、工程及水道測量服務
LANP	Landslip Preventive/Remedial Works to Slopes/Retaining Walls 斜坡 / 擋土牆的防止山泥傾瀉 / 修補工程
LANS	Landscaping 綠化工程
LIAP	Survey of Lifting Appliances and Lifting Gear 檢驗起重設備及起重裝置
LIFT	Lift, Escalator Passenger Conveyor Installation 升降機、自動梯及乘客輸送帶裝置
LOVO	Low Voltage Cubicle Switchboard Installation 低壓電開關櫃裝置
MANU	Mechanical Plants and Equipment Installation 機械裝置
MECH	Mechanical Handling and Lifting Installation 機械裝卸及起重裝置
MOTO	Motor Vehicle Body-Building and Painting 汽車車身建造及噴油
NA	Not Applicable 不適用

<u>Abbreviations 省略符號</u>	
NSC	Nominated Sub-contract 指定分包商
OTHE	Others 其他
PILE	Land Piling 土地打樁
PQ	Pre-qualification 預審投標資格
PQT	Pre-qualified Tenderers 投標資格預審合格的投標者
PREF	Prefabricated Architectural Walls and Finishes (Screens, Sound Barriers and Retaining Walls) 預製建築設計牆壁及面層物料（隔板、隔音屏障及擋土牆）
PRES	Prestressed Concrete Works for Highway Structures 路橋結構的預應力混凝土工程
PUMP	Supply and Installation of Pumpsets and Associated Pipework 供應及裝置抽水機組及相連的水管工程
PW	Port Works 海港工程
RADI	Radio Electronics Installation 無線電裝置
RD	Roads and Drainage 道路及渠務
REHI	Repair and Restoration of Historic Buildings 維修及修復有歷史性樓宇
REMO	Repair of Motors, Transformers and Switchgear 修理電動機、變壓器及電力開關裝置
ROAD	Road Marking 道路標記
ROOM	Room Air Coolers and Dehumidifiers 窗口式冷氣機及抽濕機
RT	Restricted Tender 限制投標
SC	Specialist Contractors 專門承造商
SF	Site Formation 地盤平整
SOIL	Soil and Rock Testing 土壤及岩石試驗
SPAC	Space Frame Systems 空間構架系統
SPEC	Specialized Operations for Highway Structures 路橋結構的專門工序
ST	Selective Tendering 甄選招標
STBO	Survey of Government Land Steam Boilers 檢驗政府陸上蒸汽鍋爐
STEA	Steam, Compressed Air Installation 蒸汽及壓縮空氣裝置
STRU	Structural Steelwork 鋼結構工程
SURV	Survey of Government Land Pressure Receivers subject to Steam and/ Air Pressure(but excluding Steam Boilers) 檢驗政府陸上蒸汽及/壓縮空氣壓力容器(但不包括蒸汽鍋爐)
SWIM	Swimming Pool Water Treatment Installation 游泳池水處理裝置
TSE	Traffic Signal Equipment 交通訊號器材
TURN	Turn-key Interior Design and Fitting-out Works 全包室內設計及裝修工程
UNIN	Uninterruptible Power Supply Installation 無間斷供電裝置
VIDE	Video Electronics Installation 視像裝置
WATE	Supply and Installation of Water Treatment Plant 供應及裝置濾水廠設備
WW	Waterworks 水務
M1	Up to \$100 million (estimated cost) 估計造價為1億元或以下
M2	From \$100 million, to \$200 million (estimated cost) 估計造價為1億元以上，至2億元之間
M3	From \$200 million, to \$300 million (estimated cost) 估計造價為2億元以上，至3億元之間
M4	Exceeding \$300 million (estimated cost) 估計造價為3億元以上

# FORECAST OF INVITATIONS TO TENDER

## 招標預報

JANUARY 2005 TO JUNE 2005  
2004 年 1 月 至 2005 年 6 月

PWP Item No. 工程 編號	Contract No. & Title of Contract 合約編號及合約名稱	Probable Date of Gazettal/ Inviting Tenders 憲報公告 / 招標暫定 日期	Works Category & Lowest Group Permitted to Tender 工程類別及 准許投標 最低組別	Range of Estimate of Cost 估計 造價	Name and Tel. No. of Contact Person 聯絡人姓名及電話
<b>Architectural Services Department</b> <b>建築署</b>					
-	Contract No. TC P018 Design and Construction of Fitting-out Works to Buildings and Lands and Other Properties in the Designated Contract Area: Kowloon and New Territories – Western Region 合約編號 TC P018 為合約指定區(九龍西及新界西) 內的建 築物、土地及其他物業進行設計和裝修 工程	Jan 2005 2005 年 1 月	TURN Group I and Group II 全包室內設計及 裝修工程 第 I 組 及第 II 組	M1	Mr. S.W. Fong 方少偉先生 2773 2248
102ET	Contract No. SS N318 Secondary-cum-Primary School at Area 11, Shatin, New Territories (NSC) 合約編號 SS N318 新界沙田第十一區的中學暨小學 (指定分包商)	Mar 2005 2005 年 3 月	BD Group C 建築丙組	M2	Mr. J. Beveridge 貝宏志先生 2867 3829
393RO	Contract No. SS N325 Improvement Works to Waterfront at Stanley, Hong Kong (DSC) 合約編號 SS N325 香港赤柱海濱改善工程 (承建商自選的分包商)	Apr 2005 2005 年 4 月	BD Group C 建築丙組	M1	Mr. Y.K. Chu 朱琰光先生 2867 3843
-	Contract No. TC P031 Maintenance Term Contract for Kwun Tong, Mongkok and Yaumatei 合約編號 TC P031 觀塘, 旺角及油麻地定期保養合約 (10/2005 – 9/2008)	Apr 2005 2005 年 4 月	BD Group C 建築丙組	M3	Mr. S.K. Wu 胡淑強先生 2142 0472
-	Contract No. TC P032 Maintenance Term Contract for Kowloon City, Sai Kung and Outlying Islands (Sai Kung) 合約編號 TC P032 九龍城, 西貢及離島(西貢)定期保養合約 (10/2005 – 9/2008)	Apr 2005 2005 年 4 月	BD Group C 建築丙組	M3	Mr. S.K. Wu 胡淑強先生 2142 0472
-	Contract No. TC P041 Maintenance Term Contact for Sham Shui Po, Tsuen Wan and Kwai Tsing 合約編號 TC P041 深水埗, 荃灣及葵青定期保養合約 (10/2005 – 9/2008)	Apr 2005 2005 年 4 月	BD Group C 建築丙組	M3	Mr. S.K. Wu 胡淑強先生 2142 0472

# FORECAST OF INVITATIONS TO TENDER

## 招標預報

**JANUARY 2005 TO JUNE 2005**  
**2005 年 1 月 至 2005 年 6 月**

PWP Item No. 工程 編號	Contract No. & Title of Contract 合約編號及合約名稱	Probable Date of Gazettal/ Inviting Tenders 憲報公告 / 招標暫定 日期	Works Category & Lowest Group Permitted to Tender 工程類別及 准許投標 最低組別	Range of Estimate of Cost 估計 造價	Name and Tel. No. of Contact Person 聯絡人姓名及電話
<b>Architectural Services Department</b> <b>建築署</b>					
-	Contract No. TC P042 Maintenance Term Contract for Wong Tai Sin and Shatin 合約編號 TC P042 黃大仙及沙田定期保養合約 (10/2005 – 9/2008)	Apr 2005 2005 年 4 月	BD Group C 建築丙組	M3	Mr. S.K. Wu 胡淑強先生 2142 0472
3051RE	Conservation Works for Kam Tong Hall and Adaptative Re-use into Dr. Sun Yat Sen Museum (DSC) 甘堂第復修工程及改建為孫中山博物館 (承建商自選的分包商)	Jun 2005 2005 年 6 月	BD Group C 建築丙組	M1	Mrs. Sylvia Lam 林余家慧女士 2867 3808
187SC	Contract No. SS N324 Construction of Joint-User Complex at Tseng Choi Street, Area 10, Tuen Mun (DSC) 合約編號 SS N324 屯門第十區井財街政府聯用大樓 (承建商自選的分包商)	Jun 2005 2005 年 6 月	BD Group C 建築丙組	M1	Mr. Daniel Chu 朱棟雄先生 2867 3738
<b>Civil Engineering and Development Department</b> <b>土木工程拓展署</b>					
7227CL	Contract No. CV/2004/17 Tin Shui Wai Development – Village Flood Protection Works for Sheung Cheung Wai, Phase 2 合約編號 CV/2004/17 天水圍發展計劃 - 上璋圍鄉村防洪工程 第二期	Jan 2005 2005 年 1 月	RD Group B 道路及渠務 乙組	M1	Mr. K S LI 李錦生先生 2762 5622
5001BX	Contract No. GE/2005/02 10-year Extended Landslip Preventive Measures Project, Phase 6, Package J - Landslip Preventive Works for Slopes and Retaining Walls in Hong Kong Island, Kowloon and the New Territories 合約編號 GE/2005/02 延續十年的防止山泥傾瀉計劃 第 6 期 J 組工程 - 香港、九龍和新界斜坡的防止山泥傾瀉工程	Feb 2005 2005 年 2 月	LANP 斜坡/擋土牆的 防止山泥傾瀉/ 修補工程	M1	Mr. N F CHAN 陳彥輝先生 2762 5469

# FORECAST OF INVITATIONS TO TENDER

## 招標預報

JANUARY 2005 TO JUNE 2005  
2004 年 1 月 至 2005 年 6 月

PWP Item No. 工程 編號	Contract No. & Title of Contract 合約編號及合約名稱	Probable Date of Gazettal/ Inviting Tenders 憲報公告 / 招標暫定 日期	Works Category & Lowest Group Permitted to Tender 工程類別及 准許投標 最低組別	Range of Estimate of Cost 估計 造價	Name and Tel. No. of Contact Person 聯絡人姓名及電話
<b>Civil Engineering and Development Department</b> <b>土木工程拓展署</b>					
4132CD	Contract No. CV/2004/18 Drainage Improvement Works at Tsing Lun Road, Tuen Mun 合約編號 CV/2004/18 屯門青麟路雨水排放系統改善工程	Feb 2005 2005 年 2 月	RD Group B 道路及渠務 乙組	M1	Mr. C T LAU 劉鎮達先生 2762 5656
7780TH	Contract No. TW 99/05 Retrofitting of Noise Barriers on Cheung Pei Shan Road, Tsuen Wan 合約編號 TW 99/05 荃灣象鼻山路隔音屏障加建工程	Feb 2005 2005 年 2 月	RD Group C 道路及渠務 丙組	M3	Mr. S M LAI 黎承晚先生 2417 6528
-	Contract No. CV/2004/03 Maintenance and Repairs to Franchised and Licensed Ferry Piers (2005 - 2008) 合約編號 CV/2004/03 專營及持牌渡輪碼頭的保養及修葺工 程 (2005-2008)	Feb 2005 2005 年 2 月	PW Group B & C 海港工程 乙及丙組	M1	Mr. David BLOOMFIELD 布龍飛先生 2762 5611
-	Contract No. CV/2005/01 Management and Operation of Public Filling Reception Facilities and Delivery of Public Fill to Reclamations in Mainland 合約編號 CV/2005/01 管理和運作公眾填料接收設施及運送 公眾填料至內地填海區	Feb 2005 2005 年 2 月	NA Group A, B & C 不適用 甲, 乙及丙組	M4	Mr. M Y TANG 鄧滿堯先生 2762 5544
5001BX	Contract No. GE/2005/13 10-year Extended Landslip Preventive Measures Project, Phase 6, Package A - Landslip Preventive Works for Slopes in Kowloon and Eastern New Territories 合約編號 GE/2005/13 延續十年的防止山泥傾瀉計劃 第六期第 A 組 - 位於九龍及新界東的斜坡防止山泥傾 瀉工程	May 2005 2005 年 5 月	LANP 斜坡/擋土牆的 防止山泥傾瀉/ 修補工程	M1	Mr. C K WONG 黃仲強先生 2762 5300



# FORECAST OF INVITATIONS TO TENDER

## 招標預報

JANUARY 2005 TO JUNE 2005  
2005 年 1 月 至 2005 年 6 月

PWP Item No. 工程 編號	Contract No. & Title of Contract 合約編號及合約名稱	Probable Date of Gazettal/ Inviting Tenders 憲報公告 / 招標暫定 日期	Works Category & Lowest Group Permitted to Tender 工程類別及 准許投標 最低組別	Range of Estimate of Cost 估計 造價	Name and Tel. No. of Contact Person 聯絡人姓名及電話
<b>Drainage Services Department</b> <b>渠務署</b>					
4112CD	Contract No. DC/2004/06 Drainage improvements in Northern New Territories, package A, phase 1 – construction of drainage channels in Ma Wat and North of Hong Lok Yuen, Tai Po 合約編號 DC/2004/06 新界北部雨水排放系統改善計劃，A 部分，第一期 – 大埔麻笏河及康樂園以北排水道建造工程	Jan 2005 2005 年 1 月	RD Group C 道路及渠務 丙組	M3	Mr. K W YAN 甄國旺先生 2594 7404
4222DS	Contract No. DE/2004/05 Supply and installation of E&M equipment for Tai Po sewage treatment works stage V phase I 合約編號 DE/2004/05 為大埔污水處理廠第五期第一階段工程供應及安裝機電設備	Jan 2005 2005 年 1 月	ELME NA 污水處理廠及 隔篩廠機電 裝置 不適用	M2	Mr. M K LAU 劉文基先生 2594 7304
-	Contract No. DC/2004/09 Building and civil maintenance and minor works to DSD plants and facilities (2005-2008) 合約編號 DC/2004/09 渠務署廠房及相關設施之樓宇及土木維修及小型工程 (2005-2008)	Feb 2005 2005 年 2 月	RD Group C 道路及渠務 丙組	M1	Mr. H K TUNG 董曉光先生 2594 7221
4276DS	Supply and installation of E&M equipment for Sha Tin sewage treatment works stage III extension - remaining work 為沙田污水處理廠第三階段擴建工程供應及安裝機電設備 - 餘下工程	Mar 2005 2005 年 3 月	ELME NA 污水處理廠及 隔篩廠機電 裝置 不適用	M1	Mr. W S CHUI 崔偉誠先生 2594 7302
-	Term contract for dewatered sludge collection and disposal services at Stonecutters Island sewage treatment works (2005-2007) 為昂船洲污水處理廠的脫水污泥提供收集及棄置服務的定期合約 (2005-2007)	Apr 2005 2005 年 4 月	NA 不適用	M1	Mr. K K SIU 蕭嘉錦先生 2195 3339
4125CD	Contract No. DC/2004/11 Drainage improvement from Tung Kok Wai to Sun Wai, Fanling 合約編號 DC/2004/11 粉嶺東閣圍至新圍雨水排放系統改善工程	May 2005 2005 年 5 月	RD Group C 道路及渠務 丙組	M1	Mr. B K KWOK 郭弼佳先生 2594 7403

# FORECAST OF INVITATIONS TO TENDER

## 招標預報

JANUARY 2005 TO JUNE 2005  
2004 年 1 月 至 2005 年 6 月

PWP Item No. 工程 編號	Contract No. & Title of Contract 合約編號及合約名稱	Probable Date of Gazettal/ Inviting Tenders 憲報公告 / 招標暫定 日期	Works Category & Lowest Group Permitted to Tender 工程類別及 准許投標 最低組別	Range of Estimate of Cost 估計 造價	Name and Tel. No. of Contact Person 聯絡人姓名及電話
<b>Drainage Services Department</b> <b>渠務署</b>					
4204DS	Contract No. DC/2002/02 Wan Chai East and North Point sewerage remaining Works 合約編號 DC/2002/02 灣仔東部及北角污水收集系統餘下工程	May 2005 2005 年 5 月	RD Group C 道路及渠務 丙組	M2	Mr. W K HO 何偉建先生 2594 7255
4135CD	Contract No. : DC/2003/07 Drainage improvement works at Yung Shue Long New Village in Lamma Island, Tseng Lan Shue in Sai Kung and Shui Lau Hang in Ta Kwu Ling 合約編號 DC/2003/07 南丫島榕樹壩新村、西貢井欄樹及打鼓 嶺水流坑雨水排放系統改善工程	Jun 2005 2005 年 6 月	RD Group B 道路及渠務 乙組	M1	Mr. B K KWOK 郭弼佳先生 2594 7403
<b>Electrical and Mechanical Services Department</b> <b>機電工程署</b>					
-	Contract No. 1042/EM/2004 Triennial Contract for Maintenance and Repair of, Alteration, Addition and Improvement to Liquefied Petroleum Gas Installation Including Associated Plants Equipment and Appliances 石油氣的保養、維修和加改工程，其中 包括系統、器具及配件等，為期36個月	Jan 2005 2005年1月	GAS 石油氣裝置	M1	Mr. L.T. Au 區立德先生 2197 0530
8092ZN	Replacement of Tunnel Lighting System at Cross Harbour Tunnel 海底隧道更換隧道照明系統	Mar 2005 2005年3月	INDU 工業用途 電氣裝置	M1	Mr. W. H. Ho 何偉雄先生 2808 3260
-	Triennial Contract for the O&M Installations for Hong Kong Coliseum, Hong Kong Science Museum, Hong Kong Museum of History, Ngau Chi Wan Civic Centre, Ko Shan Theatre and other municipal Venues 香港體育館、香港科學館、香港歷史博 物館、牛池灣文娛中心、高山劇場及市 政場地內的電氣裝置的三年期操作及維 修合約	Mar 2005 2005 年 3 月	INDU 工業用途 電氣裝置	M1	Mr. Pan WUT 屈兆鵬先生 2881 5736

# FORECAST OF INVITATIONS TO TENDER

## 招標預報

JANUARY 2005 TO JUNE 2005  
2005 年 1 月 至 2005 年 6 月

PWP Item No. 工程 編號	Contract No. & Title of Contract 合約編號及合約名稱	Probable Date of Gazettal/ Inviting Tenders 憲報公告 / 招標暫定 日期	Works Category & Lowest Group Permitted to Tender 工程類別及 准許投標 最低組別	Range of Estimate of Cost 估計 造價	Name and Tel. No. of Contact Person 聯絡人姓名及電話
<b>Electrical and Mechanical Services Department</b> <b>機電工程署</b>					
-	Triennial Contract for the O&M of HVAC for Hong Kong Coliseum, Hong Kong Science Museum, Hong Kong Museum of History, Ngau Chi Wan Civic Centre, Ko Shan Theatre and other municipal venues 香港體育館、香港科學館、香港歷史博物館、牛池灣文娛中心、高山劇場及市政場地內的空氣調節及製冷裝置的三年期操作及維修合約	Mar 2005 2005 年 3 月	AIR 空調裝置	M1	Mr. Pant WUT 屈兆鵬先生 2881 5736
<b>Highways Department</b> <b>路政署</b>					
6100TX	HY/2004/22 – Investigation Works for Airport Tunnel 機場隧道勘探工程	Jan 2005 2005 年 1 月	SC SOIL 專門承造商 土壤及岩石試驗	M1	Mr. C.K. NIP 聶志光先生 2707 7205
6100TX	HY/2004/21 – Corrosion Protection for Island Eastern Corridor (Stage 1) 東區走廊(第一期)防腐蝕工程	Feb 2005 2005 年 2 月	PW Group B 海港工程 乙組	M1	Mr. W.K. CHOW 鄒永光先生 3188 3386
<b>Water Supplies Department</b> <b>水務署</b>					
126WC	11/WSD/04 Water Supply to Housing Development near Choi Wan Road and Jordan Valley – Construction of Service Reservoirs, Pumping Station and Associated Mainlaying 彩雲道和佐敦谷一帶房屋發展項目的供水計劃 – 建造配水庫、抽水站和敷設相關水管	Feb 2005 2005 年 2 月	WW Group C 水務丙組	M2	Mr. K. H. WONG 黃國雄先生 2634 3500
-	1/WSD/05(K) Term Contract for Waterworks District K - Kowloon Contract Period 1.9.2005 - 31.8.2008 水務工程定期合約 地區 K - 九龍 合約期 1.9.2005 - 31.8.2008	May 2005 2005 年 5 月	WW Group C 水務丙組	M4	Mr. K. K. LI 李根基先生 2829 4455

# FORECAST OF INVITATIONS TO TENDER

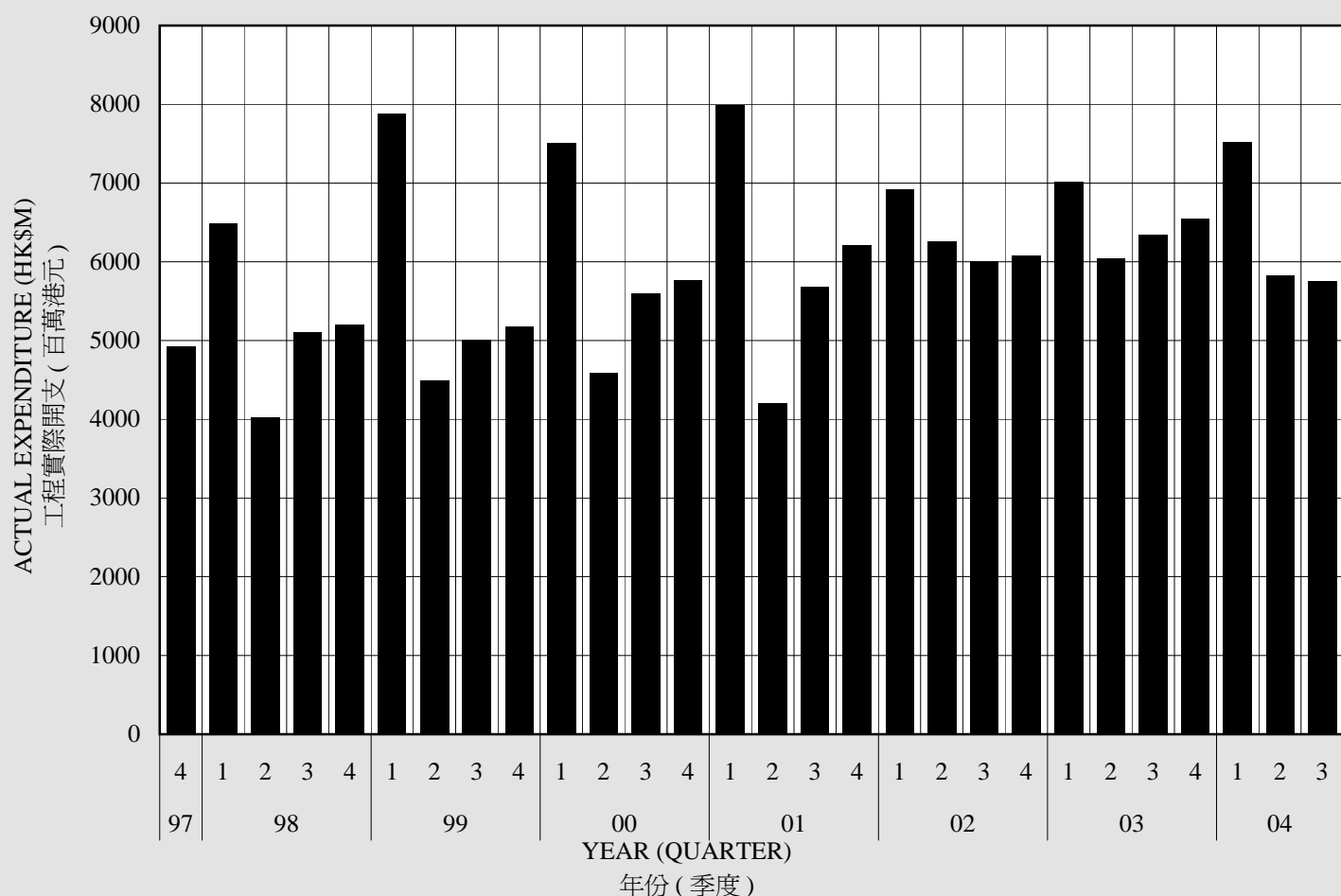
## 招標預報

**JANUARY 2005 TO JUNE 2005**  
**2004 年 1 月 至 2005 年 6 月**

PWP Item No. 工程 編號	Contract No. & Title of Contract 合約編號及合約名稱	Probable Date of Gazettal/ Inviting Tenders 憲報公告 / 招標暫定 日期	Works Category & Lowest Group Permitted to Tender 工程類別及 准許投標 最低組別	Range of Estimate of Cost 估計 造價	Name and Tel. No. of Contact Person 聯絡人姓名及電話
<b>Water Supplies Department</b> <b>水務署</b>					
-	1/WSD/05(L) Term Contract for Waterworks District L - Lantau & Outlying Islands Contract Period 1.9.2005 - 31.8.2008 水務工程定期合約 地區 L - 大嶼山及離島 合約期 1.9.2005 - 31.8.2008	May 2005 2005 年 5 月	WW Group C 水務丙組	M2	Mr. K. K. LI 李根基先生 2829 4455

**PUBLIC WORKS PROGRAMME ACTUAL EXPENDITURE  
(INCLUDING EXPENDITURE ON THE AIRPORT CORE PROGRAMME)**

**工務計劃實際開支 (包括機場核心計劃的開支)**



YEAR 年份	QTR 季度	WORKS 工程 (1)	PURCHASE OF PROPERTIES 購買物業 (2)	TOTAL 合共 (1)+(2)	YEAR TOTAL 全年總和
(ALL FIGURES ARE IN HK\$ MILLION) (所有數字以百萬港元為單位)					
1999	4	5,172.5	3.2	5,175.7	22,589.6
2000	1	7,501.7	18.7	7,520.4	23,476.1
	2	4,585.5	3.5	4,589.0	
	3	5,591.5	9.1	5,600.6	
	4	5,763.7	2.4	5,766.1	
2001	1	7,982.0	1.7	7,983.7	24,080.1
	2	4,201.4	6.1	4,207.5	
	3	5,681.5	0.2	5,681.7	
	4	6,207.7	-0.5	6,207.2	
2002	1	6,912.1	71.8	6,983.9	25,309.1
	2	6,240.6	10.9	6,251.5	
	3	5,957.0	41.4	5,998.4	
	4	6,073.9	1.4	6,075.3	
2003	1	7,009.8	5.2	7,015.0	25,937.2
	2	6,039.9	0.0	6,039.9	
	3	6,334.9	0.0	6,334.9	
	4	6,547.4	0.0	6,547.4	
2004	1	7,511.9	0.0	7,511.9	
	2	5,820.5	0.0	5,820.5	
	3	5,745.7	0.0	5,745.7	

The actual expenditure of the Public Works Programme excludes that of the Urban and Regional Councils and Hong Kong Housing Authority. The Works expenditure includes payments to contractors in respect of building and civil engineering works undertaken and project-related consultants' fees. Purchase of Properties refers to open market acquisition of completed properties.

工務計劃實際開支不包括市政局、區域市政局及香港房屋委員會在這方面的開支。「工程」開支包括付給承建商的建築和土木工程費用，以及與工程計劃有關的顧問費。購買物業是指在公開市場上購買已落成的物業。

# KEY CONSTRUCTION STATISTICS

## 建造業主要統計資料

### CONTENTS 內容

Comments on key construction statistics

建築業主要統計資料的評註

Gross value of construction work performed by Main Contractors

at construction sites, analysed by sector or by type of project

主要承建商在地盤進行建造工程的總值(按公、私營或工程類別劃分)

Number of manual workers engaged at construction sites

地盤工人數目

Usable floor areas of new buildings completed and of new building projects

for which consent to commence work has been given (for Private Sector)

已落成的新大廈及已獲准動工的新建築工程的樓面實用面積(私人樓宇)

Building Work Tender Price Index (for Arch S D building works)

建築工程投標價格指數(建築署建築工程)

Building Services Tender Price Index (for Arch S D building works)

屋宇設備投標價格指數(建築署建築工程)

Index Number of the Costs of Labour and Some Selected Materials

used in Government Contracts (used in the calculation of the Price

Fluctuation Factors of the Formula Price Fluctuation Adjustment System)

政府合約所採用的工資及一些特選材料成本指數(用以計算價格波動程式調整法之中的價格波動因子)

Index Number of the Costs of Labour and Some Selected Materials used in Government Contracts

政府合約所採用的工資及一些特選材料成本指數

Average Daily Wages of Workers Engaged in Public Sector Construction Projects

從事公營建築工程的工人每日的平均工資

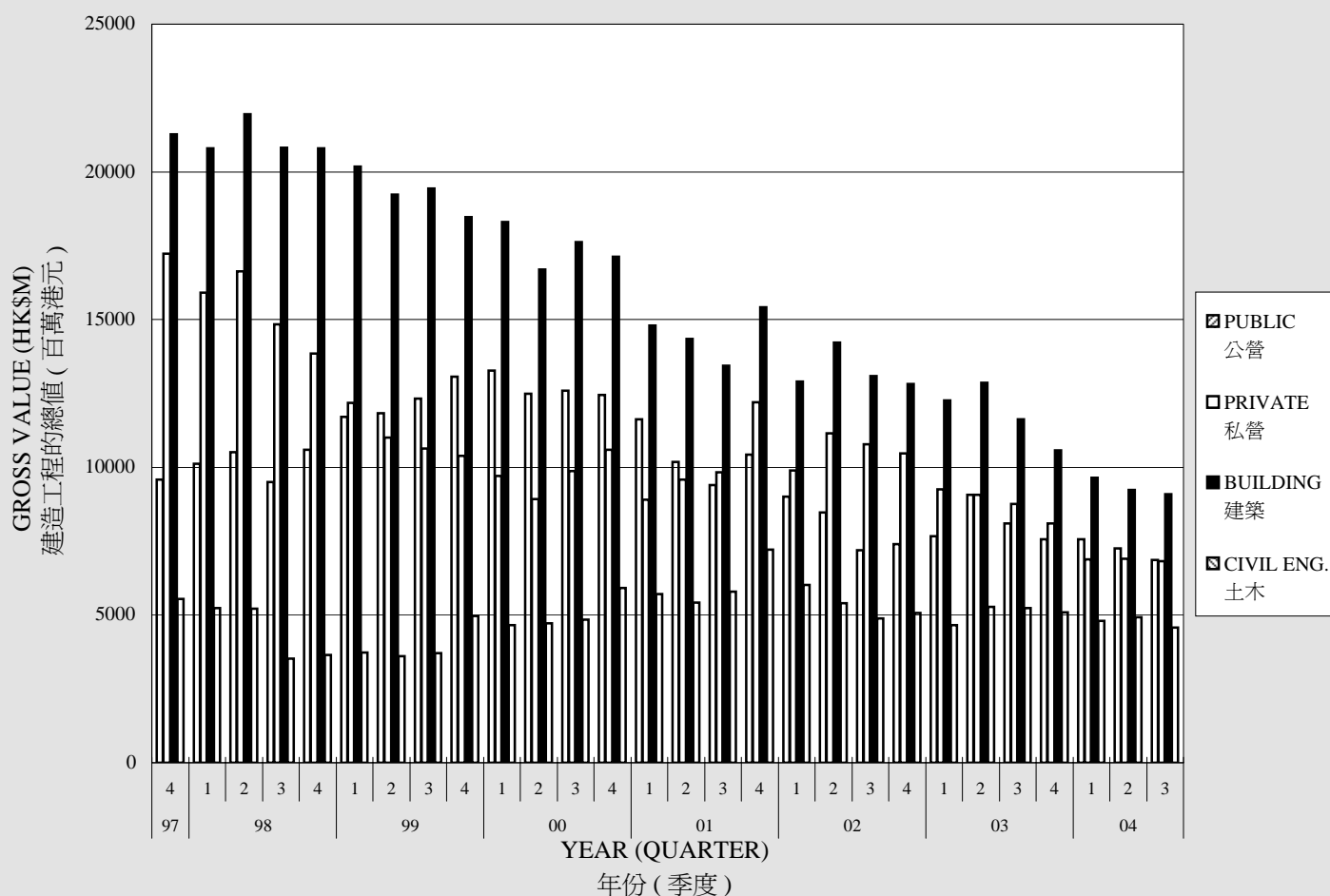
Consumer Price Index C (CPI(C))

丙類消費物價指數



# GROSS VALUE OF CONSTRUCTION WORK PERFORMED BY MAIN CONTRACTORS AT CONSTRUCTION SITES, ANALYSED BY SECTOR OR TYPE OF PROJECT

主要承建商在地盤進行建造工程的總值(按公、私營或工程類別劃分)



YEAR 年份	QTR 季度	TOTAL 總值	ANALYSED BY SECTOR 按公、私營劃分		ANALYSED BY TYPE OF PROJECT 按工程類別劃分	
			PUBLIC 公營	PRIVATE 私營	BUILDING 建築	CIVIL ENG. 土木
			( ALL FIGURES IN HK\$ MILLION ) ( 所有數字以每百萬元為單位 )			
1999	4	23,445	13,060	10,385	18,472	4,973
2000	1	22,976	13,272	9,704	18,309	4,667
	2	21,413	12,494	8,919	16,686	4,727
	3	22,472	12,603	9,869	17,624	4,847
	4	23,049	12,448	10,601	17,132	5,917
2001	1	20,517	11,619	8,898	14,806	5,711
	2	19,920	10,347	9,572	14,322	5,598
	3	19,230	9,394	9,836	13,438	5,792
	4	22,624	10,433	12,191	15,408	7,216
2002	1	18,907	9,007	9,900	12,897	6,010
	2	19,607	8,464	11,143	14,211	5,397
	3	17,960	7,191	10,769	13,084	4,875
	4	17,888	7,408	10,480	12,827	5,061
2003	1	16,921	7,662	9,259	12,253	4,667
	2	18,127	9,061	9,065	12,859	5,268
	3	16,856	8,090	8,766	11,625	5,231
	4	15,661	7,564	8,097	10,566	5,095
2004	1	14,461	7,569	6,892	9,655	4,806
	2*	14,168	7,256	6,911	9,233	4,934
	3**	13,669	6,854	6,815	9,085	4,584

The figures for the gross value of construction work performed by Main Contractors at construction sites, analysed by sector or by type of contract are prepared by the Census and Statistics Department and are given at current prices. Figures may not add up to total due to rounding.

主要承建商在地盤進行建造工程的總值數字(按公、私營或工程類別劃分)，由政府統計處編訂。數字以現時的價格計算。由於採用整數，各項數字加起來也許與總值不符。

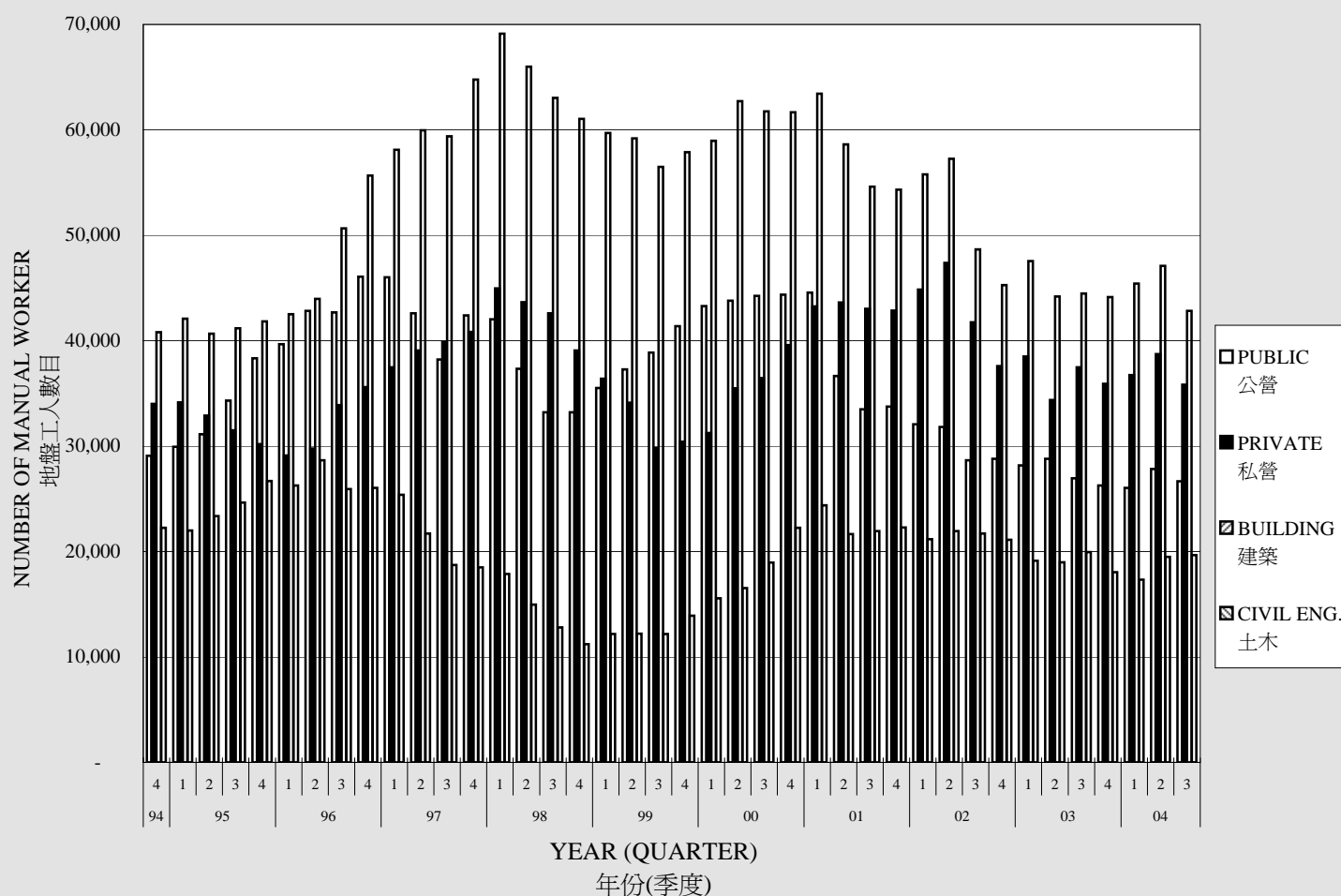
\* Revised figures 修訂數字

\*\*Provisional figures 臨時數字



# NUMBER OF MANUAL WORKERS ENGAGED AT CONSTRUCTION SITES

## 建築地盤工人數目



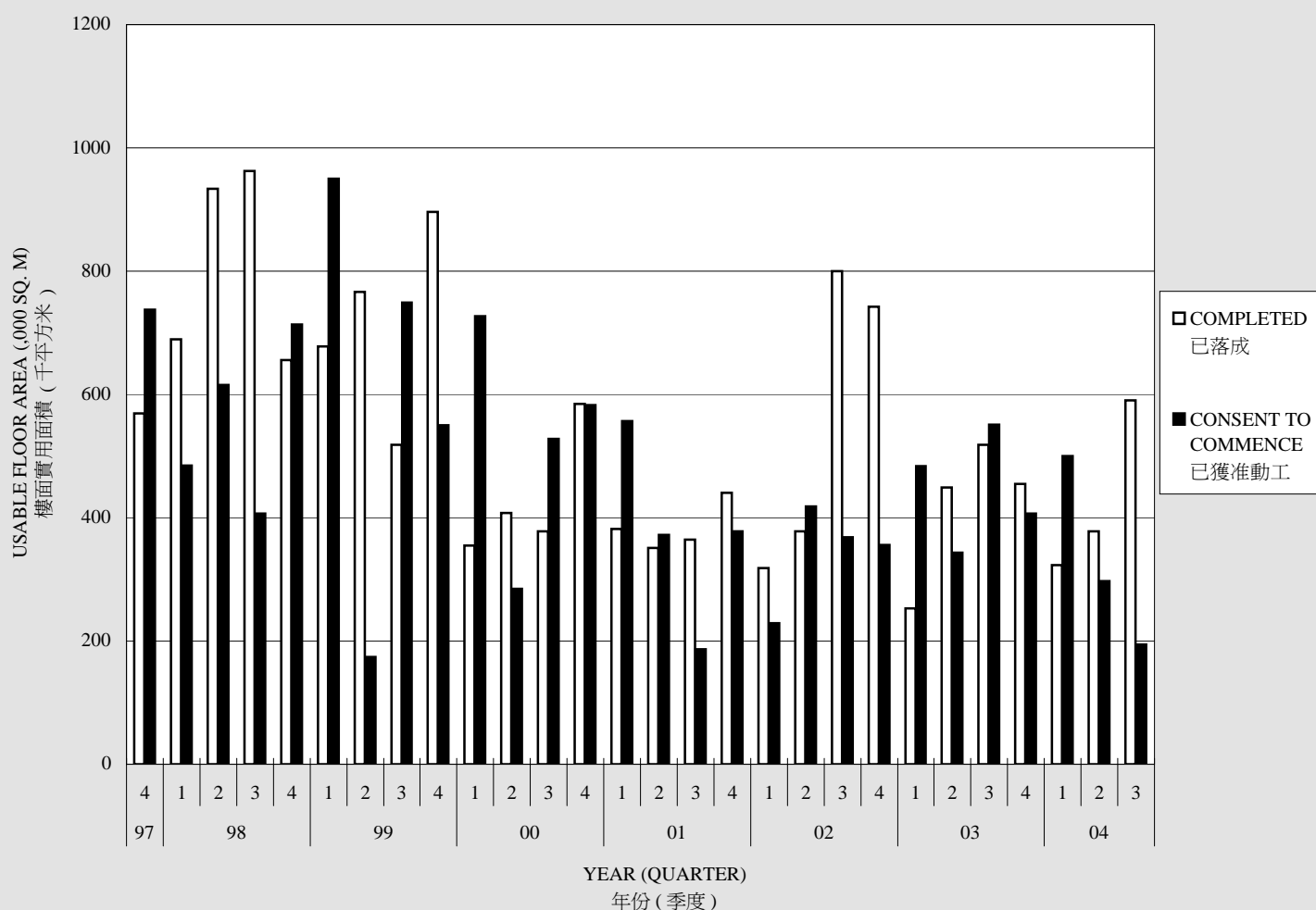
YEAR 年份	QUARTER 季度	TOTAL 總數	ANALYSIS BY SECTOR 按公、私營劃分		ANALYSIS BY TYPE OF PROJECT 按工程類別劃分	
			PUBLIC 公營	PRIVATE 私營	BUILDING 建築	CIVIL ENG. 土木
1999	4	71789	41366	30423	57869	13920
2000	1	74521	43286	31235	58957	15564
	2	79261	43782	35479	62725	16536
	3	80691	44253	36438	61751	18940
	4	83924	44355	39569	61676	22248
2001	1	87813	44558	43255	63418	24395
	2	80269	36645	43624	58619	21650
	3	76524	33489	43035	54593	21931
	4	76601	33761	42840	54323	22278
2002	1	76931	32074	44857	55762	21169
	2	79193	31823	47370	57266	21927
	3	70376	28645	41731	48660	21716
	4	66393	28810	37583	45286	21107
2003	1	66675	28181	38494	47548	19127
	2	63174	28793	34381	44184	18990
	3	64422	26939	37483	44462	19960
	4	62176	26264	35912	44146	18030
2004	1	62761	26034	36727	45428	17333
	2	66565	27824	38741	47081	19484
	3	62482	26668	35814	42830	19652

The figures for the number of manual workers engaged at building and civil engineering construction sites, analysed by sector (Public and Private) or by type of project (Building and Civil Engineering) are based on the Quarterly Report of Employment and Vacancies at Construction Sites prepared by the Census and Statistics Department.

在建築及土木工程地盤工作的地盤工人數目，按公營及私營或工程類別(建築及土木)加以劃分。這些資料以政府統計處所編撰的「建築地盤就業人數及空缺季報」作為依據。

# USABLE FLOOR AREAS OF NEW BUILDINGS COMPLETED AND OF NEW BUILDING PROJECTS FOR WHICH CONSENT TO COMMENCE WORK HAS BEEN GIVEN

已落成的新大廈及已獲准動工的新建築工程的樓面實用面積



YEAR 年份	QTR 季度	NEW BUILDINGS COMPLETED 已落成的新大廈 ( FIGURES IN '000 SQ. M. OF USABLE FLOOR AREA) 樓面實用面積以每千平方米為單位	BUILDINGS WITH CONSENT TO COMMENCE WORK 已獲准動工的大廈
------------	-----------	--	--

1999	4	896	550
2000	1	355	727
	2	408	285
	3	378	528
	4	585	583
2001	1	382	557
	2	351	372
	3	364	187
	4	440	378
2002	1	318	229
	2	378	418
	3	800	368
	4	742	356
2003	1	253	484
	2	449	343
	3	518	551
	4	455	407
2004	1	323	500
	2	378	297
	3	590	194

Figures for usable floor areas for buildings completed and for building projects for which consent to commence work has been given are extracted from the Monthly Statistics issued by the Buildings Department. The usable floor area is defined as the aggregate of the area of the floor or floors in a storey or a building excluding any staircases, public circulation space, lift landings, air-conditioning system or similar service provided for the building.

已落成的大廈及已獲准動工的建築工程的樓面實用面積數字，摘引自屋宇署每月發表的統計數字。樓面實用面積指一層樓宇或一座大廈內的樓面面積總和，但不包括樓梯間、公用地方、升降機台、廁所、廚房，以及大廈升降機、空氣調節系統或類似服務的機器間。

# BUILDING WORKS TENDER PRICE INDEX (BWTPI)

## 建築工程投標價格指數

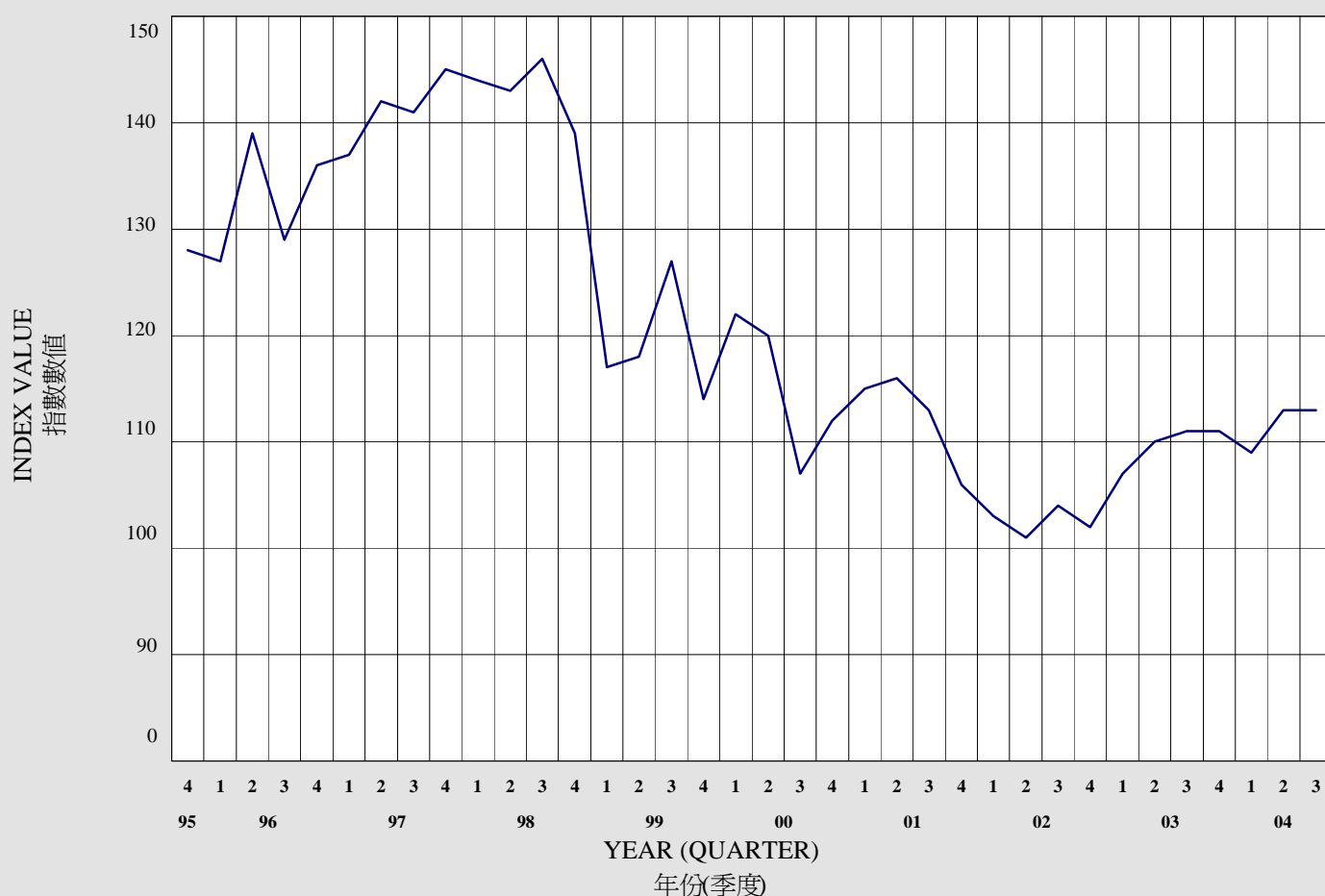


YEAR 年份	QUARTER 季度	BWTPI 投標價格指數
1998	4	1034
1999	1	1024
	2	1031
	3	1025
	4	989
2000	1	959
	2	873
	3	858
	4	844
2001	1	862
	2	842
	3	807
	4	721
2002	1	687
	2	742
	3	692
	4	733
2003	1	720
	2	723
	3	722
	4	681
2004	1	685
	2	712
	3	704

Building Works Tender Price Index (BWTPI) is a quarterly index compiled by the Architectural Services Department as an aid to adjust building cost data for estimating purposes. It also provides an indication of the level of tender prices for new building works undertaken by the Architectural Services Department. The BWTPI does not reflect the level of tender prices for mechanical and electrical contracts. It is computed in a similar way to that used by the Royal Institution of Chartered Surveyors' Building Cost Information Service in the United Kingdom. The value in the first quarter of 1970 is taken to be the base index value of 100, and subsequent values are expressed in index form based on the first quarter 1970 value.

建築工程投標價格指數由建築署每季編訂一次，以便調整建築成本數據，作各種評估用途。這項指數亦可說明建築署新建築工程的投標價位，但不會反映機電工程合約的投標價位。指數的計算方法，與皇家特許測量師學會建築成本資料服務處所採用的相同。一九七零年第一季的數值定為基數，數值為100；其後的數值均以一九七零年第一季為基準，以指數形式表示。

# BUILDING SERVICES TENDER PRICE INDEX (BSTPI) 屋宇設備投標價格指數



YEAR 年份	QUARTER 季度	BSTPI 屋宇設備投標 價格指數	1. The Building Services Tender Price Index (BSTPI) reflects the tender prices for building services installations in new building works undertaken by the Architectural Services Department. It complements the Tender Price Index for new building works undertaken by Architectural Services Department (TPI) which excludes building services works. It was first compiled in the 4th quarter of 1989 and the value for the 4th quarter of 1989 was taken as the base index of 100. Subsequent values are expressed in index form based on the 4th quarter 1989 value. The BSTPI is calculated in a manner similar to the TPI. The index value of a quarter is compiled based on a base schedule of items and according to the tendered rates of the items in that quarter.  2. The index figures as from the 1st quarter of 1999 are to be compiled with basis on a revised base schedule of items which is duly formulated with reference to the contracts tendered in 1998, and with conversion to the common base index 100 at 1989. (The figures with asterisk are compiled based on the revised schedule of items. This allows comparable data series spliced at end of 1998.)
1998	4	139	<p>1. 屋宇設備投標價格指數反映建築署新建築工程的屋宇設備投標價格指數。它首次編訂於一九八九年第四季，該季的價格指數設定為基準數值，並以指數100作為表示。以後每季的價格指數均會與基準數值作出比較，並以指數形式表示。屋宇設備投標價格指數的計算方法，與建築署新建築工程投標價格指數所採用的方法相同；每一季的價格指數是按照一張基本項目清單內各項目的投標價格編訂而成。</p> <p>2. 由一九九九年第一季起的價格指數，會按照經修訂的基本工料清單而編訂，再加以轉換到一九八九年以100為基數的同等水平，該清單則以一九八八年投標的合約作為依據。(附表內有星號的指數是按照經修訂的基本工料清單而編訂，使到得出一套可與一九八八年數值銜接的價格指數，以便比較。)</p>
1999	1	117*	
	2	118*	
	3	127*	
	4	114*	
2000	1	122*	
	2	120*	
	3	107*	
	4	112*	
2001	1	115*	
	2	116*	
	3	113*	
	4	106*	
2002	1	103*	
	2	101*	
	3	104*	
	4	102*	
2003	1	107*	
	2	110*	
	3	111*	
	4	111*	
2004	1	109*	
	2	113*	
	3	113*	

# INDEX NUMBER OF THE COSTS OF LABOUR AND SOME SELECTED MATERIALS USED IN GOVERNMENT CONTRACTS

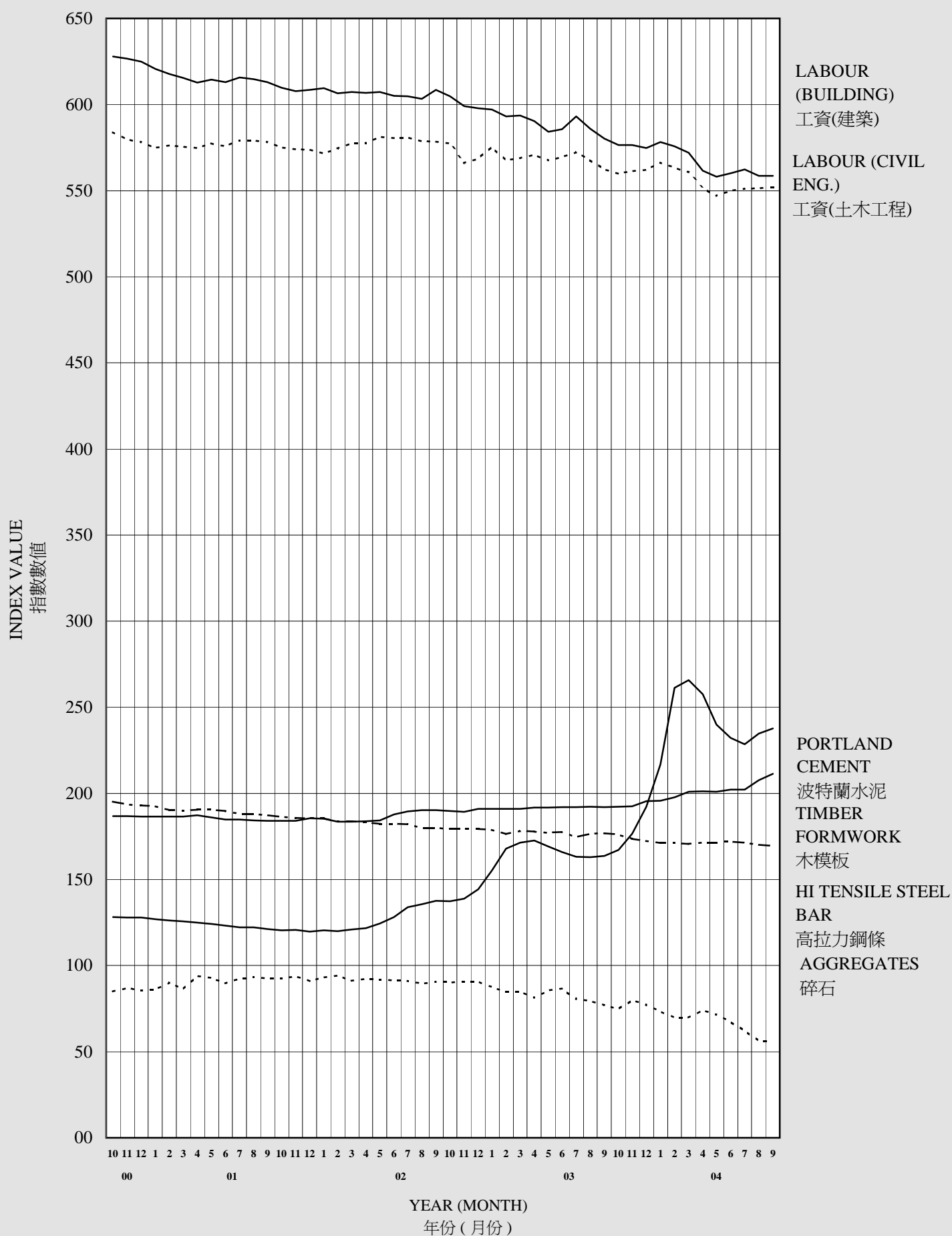
## 政府合約所採用的工資及一些特選材料成本指數

	Index Numbers (July 1982 = 100) 指數數值 (1982年7月=100)					
	2004					
	ARP 4月	MAY 5月	JUN 6月	JUL 7月	AUG 8月	SEP 9月
<b>LABOUR 工資</b>						
Composite labour for civil engineering contracts 綜合工資(土木工程合約)	551.8	547.0	549.9	551.2	551.4	551.8
Composite labour for building contracts 綜合工資(建築合約)	561.7	558.1	560.2	562.4	558.7	558.7
<b>SELECTED MATERIALS 特選材料</b>						
Aggregates 碎石	73.9	71.6	67.5	62.3	56.4	56.0
Bitumen 瀝青	170.0	176.9	176.9	176.9	176.9	176.9
Portland cement (Ordinary) 波特蘭水泥(普遍)	171.3	171.3	172.2	171.5	170.2	169.7
Hydrated lime 熟石灰	117.8	118.3	118.5	118.9	118.1	119.4
Bricks (Red) 紅磚	227.6	233.7	235.8	236.6	236.2	236.8
Sand 砂	73.7	70.0	70.8	71.0	70.8	70.7
Mild steel round bars 軟圓鋼條						
6mm to 40 mm 6毫米至40毫米	264.8	252.7	247.9	248.3	251.8	261.4
20mm & above 20毫米及以上	270.8	259.6	258.3	258.7	261.7	270.5
16mm & below 16毫米及以下	258.8	245.7	237.9	238.4	242.4	250.9
High tensile steel bars 高拉力鋼條						
10mm to 40mm 10毫米至40毫米	257.5	240.0	232.3	228.4	234.6	237.6
Light structural steelwork 輕結構鋼料	280.0	279.6	279.2	279.4	279.5	289.8
Timber formwork 木模板	201.1	201.0	202.3	202.3	207.6	211.3
Diesel fuel 柴油	294.9	304.3	310.6	310.6	325.1	329.2
Hardwood 硬木	207.1	206.9	207.9	207.9	213.0	220.2
Teak 柚木	209.1	209.1	209.1	209.1	209.1	209.1
Mosaic tiles 紙皮石	277.9	277.9	277.9	277.9	277.9	278.0
Glazed wall tiles 牆壁磁磚	348.3	347.8	345.7	345.7	345.7	347.1
GMS pipes 鉛水喉管	209.5	212.2	212.2	213.9	214.8	214.8
PVC pipes 硬膠喉管						
Diameter not exceed 85mm 直徑85毫米及以下	197.8	197.8	197.8	197.8	197.8	199.8
Diameter not exceed 85mm 直徑85毫米以上	189.0	189.0	189.0	189.0	189.0	191.0
Glass 玻璃	173.7	172.9	171.3	171.3	171.3	171.3

The index number of the costs of labour and selected building materials are compiled by the Census & Statistics Department for use in Government contracts for the calculation of the Price Fluctuation Factor of the Formula Price Fluctuation Adjustments.  
政府合約所採用的工資及特選材料成本指數，由統計處編訂，用以計算價格波動程式調整法之中的價格波動因子。

INDEX NUMBER OF THE COSTS OF LABOUR AND SOME SELECTED MATERIALS USED IN  
GOVERNMENT CONTRACTS

政府合約所採用的工資及一些特選材料成本指數

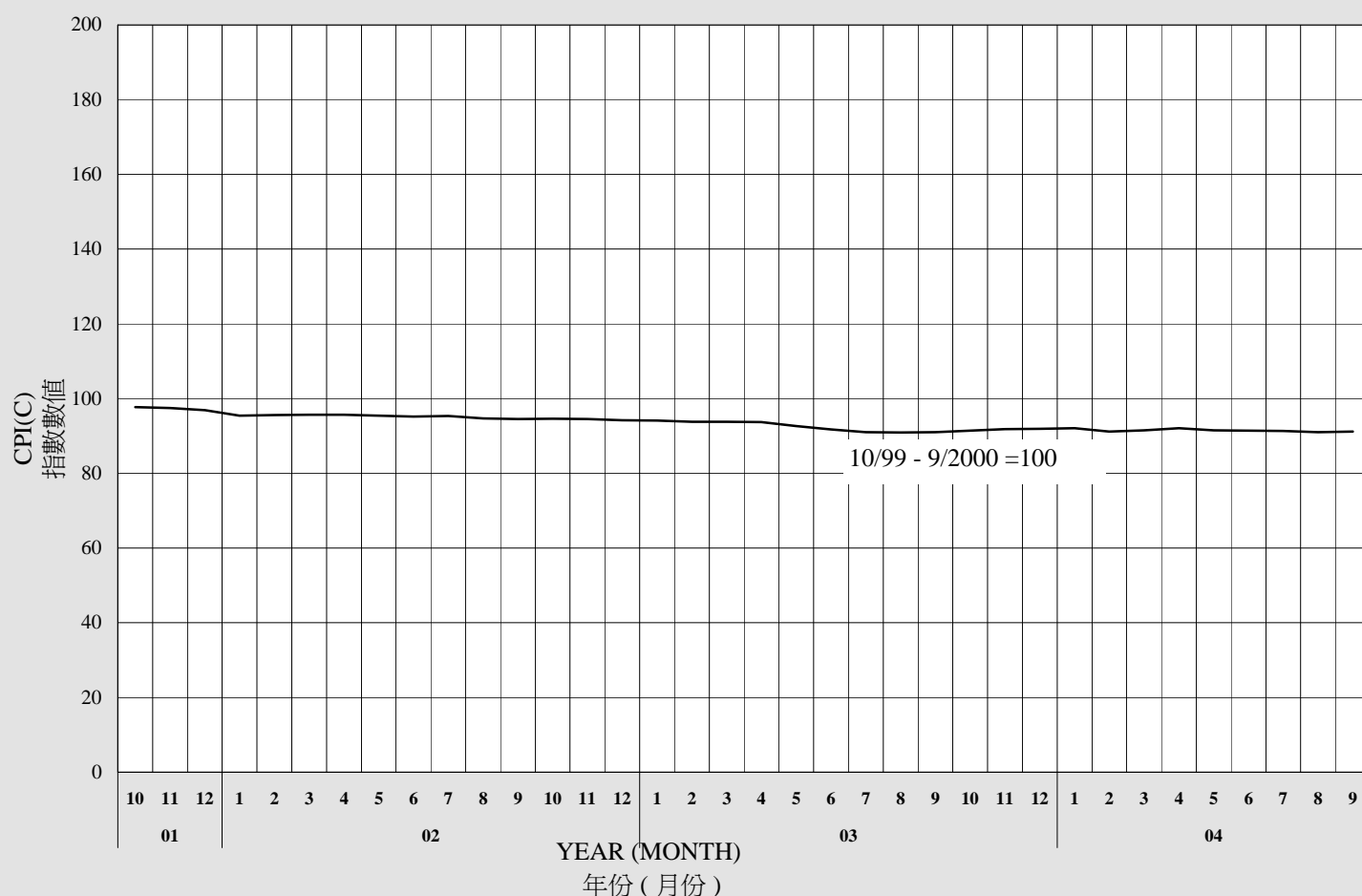


**AVERAGE DAILY WAGES OF WORKERS ENGAGED IN  
PUBLIC SECTOR CONSTRUCTION PROJECTS  
從事公營建築工程的工人每日的平均工資**

Occupation 職業	2004					
	JUL 7月		AUG 8月		SEP 9月	
	HK\$ 港幣	INDEX 指數	HK\$ 港幣	INDEX 指數	HK\$ 港幣	INDEX 指數
General workers 普通工人 General workers include labourers, excavators, concreter's labourers, bricklayer's labourers, plasterer's labourers, heavy load labourers and diver's linesmen 普通工人包括雜工、挖土工、混凝土雜工、砌磚雜工、批盪雜工、起重工及潛水員幫工。	582	2,911	580	2,898	579	2,893
Concretor 混凝土工	1,012	5,059	1,013	5,066	1,012	5,060
Bricklayer 砌磚工	922	4,608	837	4,187	853	4,266
Drainlayer 地渠工	935	4,677	925	4,625	922	4,612
Mason 砌石工	884	4,422	874	4,368	801	4,005
Bar bender and fixer 鋼筋屈紮工	1,221	6,106	1,221	6,104	1,210	6,051
Metal worker 金屬工	857	4,283	855	4,274	860	4,301
General welder 普通焊接工	786	3,928	783	3,916	788	3,940
Carpenter(formwork) 木模板工	1,148	5,741	1,135	5,677	1,124	5,619
Joiner 細木工	1,023	7,117	1,022	5,111	1,058	5,292
Plumber 水喉工	947	4,735	949	4,746	947	4,734
Construction plant mechanic 建造機械技工	813	4,067	822	4,108	826	4,128
Plasterer 批盪工	950	4,750	932	4,661	933	4,666
Glazier 玻璃工	897	4,484	865	4,327	880	4,399
Painter and Decorator 髹漆及裝飾工	885	4,426	887	4,433	882	4,412
Plant & Equipment operator (load shifting) 機械設備操作工(負荷物移動機械)	784	3,922	785	3,925	780	3,902
Truck driver 重型車輛駕駛員	609	3,044	611	3,057	607	3,036
Rock-breaking driller 鑽破工	823	4,144	823	4,113	830	4,150
Bamboo scaffolder 竹棚工	1,068	5,341	1,049	5,243	1,058	5,288
Structural steel erector 結構鋼架工	973	4,863	914	4,570	913	4,566
Diver 潛水員	1,636	8,181	1,703	8,517	1,701	8,503
Leveller 平水工	762	3,808	756	3,779	757	3,783
Marble worker 雲石工	978	4,891	1,057	5,286	1,055	5,277
Structural steel welder 結構鋼材焊接工	923	4,616	961	4,084	919	4,597
Rigger/metal formwork erector 索具工(叻架)/金屬模板裝嵌工	783	3,917	777	3,887	764	3,819
Asphalter (road construction) 瀝青工(道路建造)	741	3,704	741	3,704	697	3,485
Electrical fitter (Incl. electrician) 電氣裝配工(包括電工)	772	3,861	778	3,892	775	3,874
Mechanical fitter 機械打磨裝配工	753	3,763	735	3,674	729	3,643
Refrigeration/AC/ventilation mechanic 空調製冷設備技工	688	3,441	701	3,506	701	3,506
Fire services mechanic 消防設備技工	771	3,855	778	3,890	777	3,883
Lift and escalator mechanic 升降機及自動梯技工	816	4,078	835	4,174	882	4,409
Building services maintenance mechanic 屋宇設備保養技工	886	4,427	893	4,466	859	4,296
Cable jointer(power) 強電流電纜接駁工	742	3,712	648	3,241	643	3,214
<p>From April 2004 onwards, expanded coverage of construction sites and occupation has been adopted for compiling the statistics above. For March 2004 and before, figures only include relevant construction projects under the purview of Architectural Services Department, Civil Engineering Department, Territory Development Department, Drainage Services Department, Highways Department and Water Supplies Department. From April 2004 onwards, figures also include construction projects under the purview of Electrical and Mechanical Services Department, Housing Department, Environmental Protection Department and term maintenance projects. Hence, figures for April 2004 onwards are not strictly comparable with those for March 2004 and before.</p> <p>由二零零四年四月起，上表的統計數字涵蓋了更多種類的建築地盤及職業。在二零零四年三月及之前，數字只包括建築署、土木工程署、拓展署、渠務署、路政署及水務署有關工程項目。由二零零四年四月起，數字還包括機電工程署、房屋署、環境保護署及合約維修工程等項目。因此，二零零四年四月及之後的數字不能與二零零四年三月及之前的數字作嚴格比較。</p>						

# CONSUMER PRICE INDEX C (CPI(C))

## 丙類消費物價指數



YEAR 年份	MONTH 月份	CPI 消費物價指數
		10/99 - 9/2000 =100
2002	10	94.60
	11	94.50
	12	94.20
2003	1	94.10
	2	93.80
	3	93.80
	4	93.70
	5	92.60
	6	91.70
	7	91.00
	8	90.90
	9	91.00
	10	91.40
	11	91.80
	12	91.90
2004	1	92.10
	2	91.20
	3	91.50
	4	92.10
	5	91.50
	6	91.40
	7	91.30
	8	91.00
	9	91.20

The CPI(C) was formerly known as the Hang Seng CPI and was compiled by Hang Seng Bank. Starting from the reference month of July 1999, the data collection and compilation work of the index have been taken up by the Census and Statistics Department and the index has been renamed as CPI(C). Apart from being a standardization of titles, the renaming does not affect the compilation methodology nor the continuity of the index series. The CPI(C) from October 1999 onwards is compiled based on expenditure patterns obtained from a Household Expenditure Survey conducted during October 1999 to September 2000. The CPI for earlier periods is compiled based on old patterns and has been re-scaled to the new base period (i.e. October 1999 - September 2000) for linking with the new index series. The CPI(C) relates to 10% of households, which are in the relatively high expenditure range. The monthly household expenditure range of this group in the base period was HK\$32,500 - HK\$65,999.

丙類消費物價指數前稱為恒生消費物價指數,由恒生銀行編制。由一九九九年七月的統計月份開始,該指數的數據搜集和編制工作由政府統計處負責,而指數亦改稱為丙類消費物價指數。除了名稱上的統一化,該指數的編制方法及指數數列的連貫性沒有影響。一九九九年十月起的丙類消費物價指數,是根據在一九九九年十月至二零零零年九月進行的住戶開支統計調查所得的開支模式編製,較早的指數則是根據舊的開支模式而經過按比例換算與新基期(即一九九九年十月至二零零零年九月)的指數拼接。丙類消費物價指數的對象是開支範圍較高的住戶,約佔全部住戶10%。這組住戶在基期時的每月住戶開支範圍是港幣32,500元至港幣65,999元之間。