

**For discussion on
20 November 2017**

**LanDAC SD SC
Paper No. 06/2017**

**LANTAU DEVELOPMENT ADVISORY COMMITTEE
SUSTAINABLE DEVELOPMENT SUBCOMMITTEE**

Ecological study for Pui O, Shui Hau, Tai O and Neighbouring Areas

PURPOSE

This paper aims to brief Members on the ecological study for Pui O, Shui Hau, Tai O and the neighbouring areas and to seek Members' views.

BACKGROUND

2. In previous discussions with various stakeholders¹ about taking forward initiatives on conservation of Lantau, the Government has received views suggesting that there were imminent needs to collect information for review of the current situation of Lantau (including its ecological environment).

3. The Task Force on Lantau Conservation has shortlisted 11 First Batch Discussion Items for priority actions, which involve conservation of areas of ecological significance, including Tai O, Pui O and Shui Hau. It was also proposed in the Sustainable Lantau Blueprint published in June 2017 that the wetland at Pui O, mudflat and sandflat habitats at Shui Hau and wetland and mangrove at Tai O should be conserved.

4. It was also stated in the Chief Executive's Policy Agenda published in October 2017 that the Government would "deploy different resources to take forward various appropriate countryside conservation initiatives in selected pilot areas on Lantau, such as Tai O, Shui Hau and Pui O, to support the efforts in developing and conserving Lantau".

¹ They include the discussions of the Task Force on Lantau Conservation and proposals made by the Legislative Council Members when discussing the setting up of the Sustainable Lantau Office.

(Translated Version)

5. In this connection, the Civil Engineering and Development Department (CEDD) plans to launch the “Ecological Study for Pui O, Shui Hau, Tai O and Neighbouring Areas – Feasibility Study”, with the aim of collating the essential ecological information on Pui O, Shui Hau, Tai O and the neighbouring areas for establishment of the database for the Lantau, in addition to exploring the feasibility of various conservation measures for these areas.

STUDY SCOPE AND PROGRESS

6. The “Ecological Study for Pui O, Shui Hau, Tai O and Neighbouring Areas – Feasibility Study” will review and consolidate the existing ecological information of Pui O, Shui Hau, Tai O and the neighbouring areas (Study Area) (refer to **Annex**), as well as to undertake the following tasks for the habitats within the study area:

Pui O, Shui Hau and Tai O

- Reviewing the scope of ecological surveys for Pui O, Shui Hau and Tai O, conducting the ecological surveys, as well as assessing the ecological impacts in these areas; and
- Recommending feasible conservation measures for Pui O, Shui Hau and Tai O.

The Remaining Habitats within the Study Area

- Conducting preliminary assessments on the ecological significance of the remaining habitats within the study area, and the need of conducting ecological surveys/studies on such habitats; and
- Prioritizing the ecological surveys/studies with formulation of the implementation strategies for the habitats concerned.

7. The CEDD invited tenders for the study in September 2017. The study period is about 21 months. It is anticipated to commence the study in the fourth quarter this year.

EXPERT GROUPS

8. CEDD will set up expert groups for the specific topics of

(Translated Version)

“Conservation of Pui O and Shui Hau” and “Conservation of Tai O”, with a view to providing independent professional advice on Lantau conservation proposals (including findings and recommendations of the ecological study). The CEDD will also report the findings and recommendations of the study to the Sustainable Development Subcommittee in due course.

CONCLUSION

9. Members are invited to note and express their views on the progress of the ecological study for Pui O, Shui Hau, Tai O and the neighbouring areas.

Civil Engineering and Development Department
November 2017

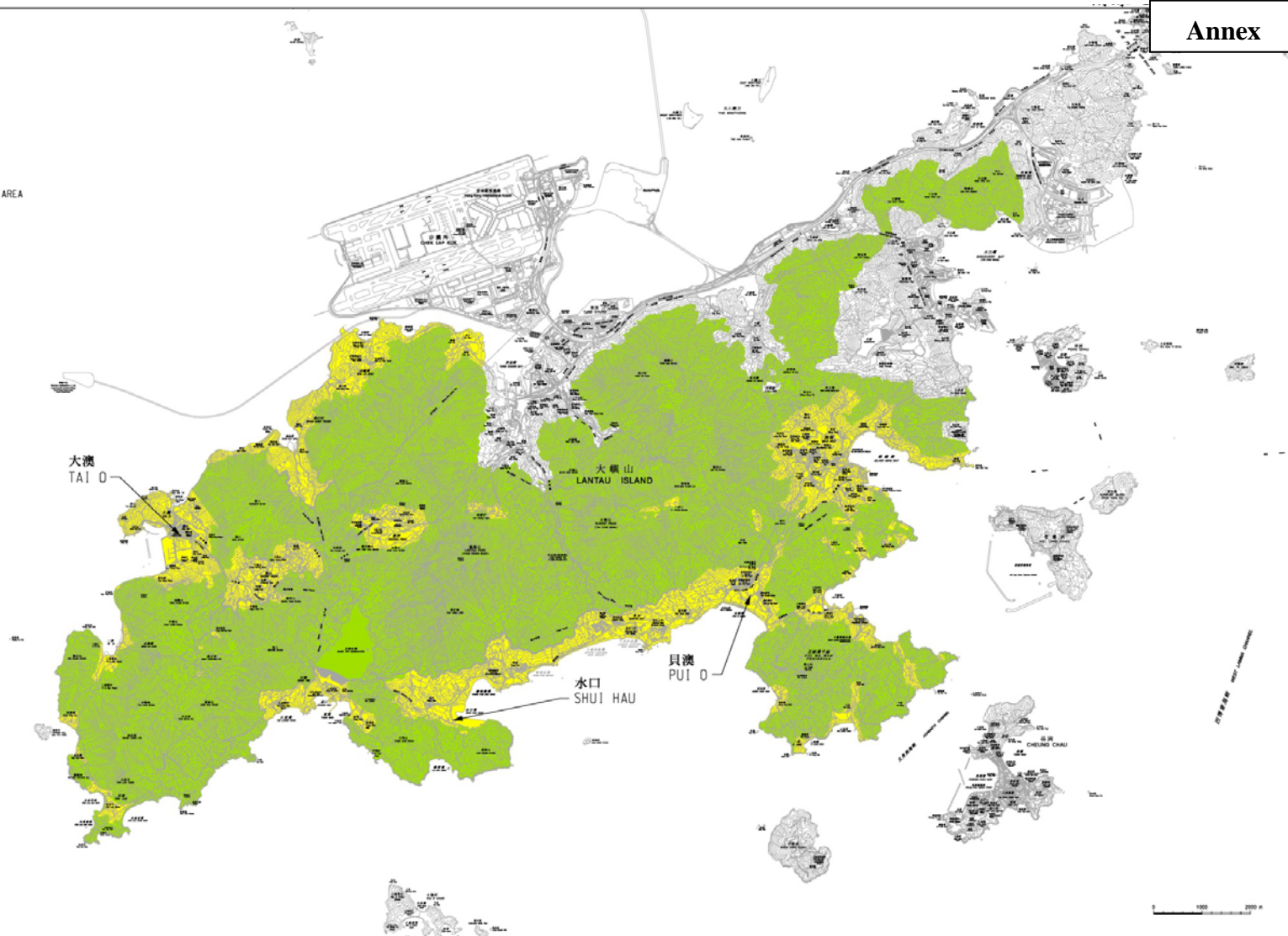
(Translated Version)

Annex



圖例：
LEGEND :

- 研究範圍
STUDY AREA
- 郊野公園範圍
COUNTRY PARK AREA



圖則名稱 drawing title

貝澳、水口、大澳及其鄰近地區的生態研究 - 可行性研究
研究範圍

ECOLOGICAL STUDY FOR PUI O, SHUI HAU, TAI O AND NEIGHBOURING AREAS - FEASIBILITY STUDY
STUDY AREA

項目編號 item no.

比例 scale

1 : 40 000 @A1

圖則編號 drawing no.

HKI-Z2610

辦事處 office

港島及離島拓展處
HONG KONG ISLAND AND ISLANDS
DEVELOPMENT OFFICE

CEDD 土木工程拓展署
CIVIL ENGINEERING AND
DEVELOPMENT DEPARTMENT