

**For Discussion on  
12 November 2014**

*Lantau Development Advisory Committee  
Economic & Social Development Subcommittee  
Paper No. 03/2014*

**Lantau Development Advisory Committee  
Economic and Social Development Subcommittee**

**Key Works and Plans of  
Economic and Social Development Proposals**

**INTRODUCTION**

In the meeting of the Economic and Social Development Subcommittee (ESD SC) on 10 October 2014, ESD SC members discussed and agreed to the Terms of Reference stated in ESD SC Paper No. 1/2014 and broadly discussed the economic and social development proposals stated in ESD SC Paper No. 2/2014. Some views were expressed that the Government should expedite further actions to investigate the feasibility and effectiveness of the proposals, respond and draw up the work plans.

2. With reference to Members' views and subsequent studies, we now suggest starting the following works for Members' consideration.

**WORK (1)**

3. We have been progressively launching several large-scale studies on the future developments in the north shore and in the northeast of Lantau as well as the proposed East Lantau Metropolis, including Tung Chung New Town Extension, topside development at Hong Kong Boundary Crossing Facilities Island of the Hong Kong-Zhuhai-Macao Bridge, East Lantau Metropolis, and the proposed reclamations at Sunny Bay and Siu Ho Wan. To align with the above studies, we need to take a macro view to consider the unique advantages of Lantau so as to formulate the overall development strategy for the commercial land in Lantau, and establish the market positioning for commercial use of the individual strategic development sites. The Planning Department sets to launch a short-term (6-month) topical study which is expected to commence in late 2014/early 2015. The Development Bureau (DEVB)

will report to LanDAC and relevant Subcommittees on the recommendations of the study in a timely manner.

## **WORK (2)**

4. With regard to most of the areas that have been designated for recreational and tourism uses in Lantau, DEVB will set to launch short-term studies covering the following two main areas:

4.1 DEVB will formulate the direction and positioning of the overall recreational and tourism development of Lantau, including integration and optimization of the existing and new recreational and tourism facilities, so as to further increase the overall carrying capability of Lantau for local and overseas visitors and enhance its overall attractiveness; consider whether the proposals received by the LanDAC regarding recreation and tourism are in line with the direction and positioning of the overall recreational and tourism development of Lantau; decide whether the proposals are cost-effective and preliminary technically and legally reasonable and feasible; and identify the preliminary requirements of the proposals with regard to the infrastructure (including transport), in particular whether the existing infrastructure can cope with such requirements.

4.2 Upon the completion of preliminary studies on individual proposals, detailed studies will be conducted to proceed with the relevant proposals. South Lantau is blessed with spectacular natural scenery. As such, there have been a number of proposals for the development of spa and resort facilities in the area. Several years ago, the Government engaged a consultant to commission a preliminary consultancy study on the concept of developing spa and resort facilities in Hong Kong. The study identified Cheung Sha as having the potential but the technical feasibility has not yet been established. Moreover, similar development has also been suggested at Tai A Chau on Soko Islands. Due to the remoteness of the island, further assessment on the proposal is needed. We will launch a study to further explore the feasibility of developing spa and

**(Translated Version)**

resort facilities at the aforementioned locations from technical and other perspectives. In parallel, the study will also look into the feasibility of extending Ngong Ping 360 to Tai O.

5. We will commence the above studies shortly. It is expected that staged results will be available in mid-2015 and the studies will be completed at the end of 2015/early 2016. DEVB will consult and report to the LanDAC and relevant Subcommittees in a timely manner.

**WORK (3)**

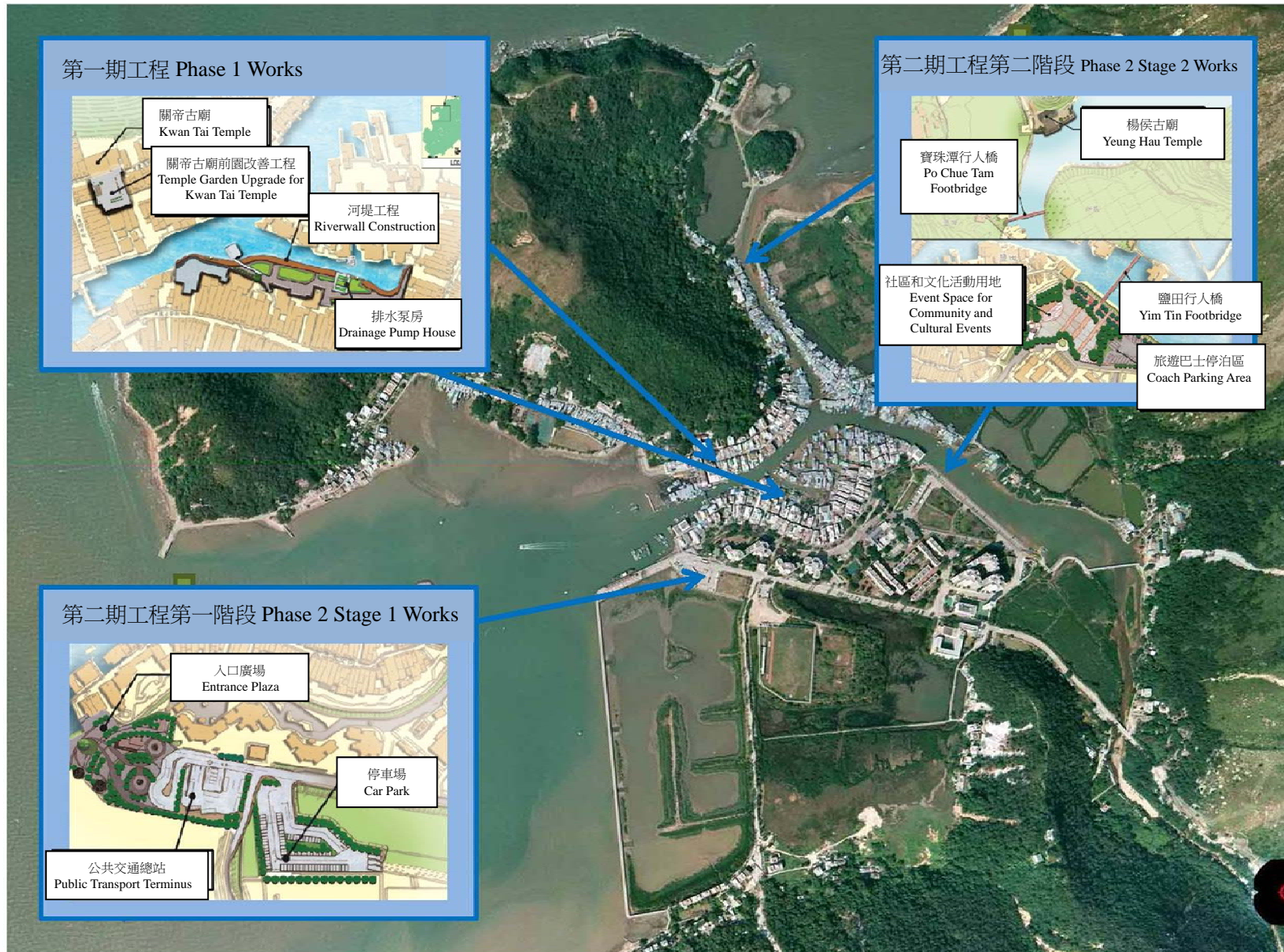
6. To boost the local economy and share the fruits of development with the public at an early stage, DEVB will, apart from the above studies, continue the improvement works for the revitalisation of Tai O (**Annex 1**) and Mui Wo (**Annex 2**), and commence the construction of mountain bike trail networks (**Annex 3**). Subject to the availability of resources, DEVB will also plan and commence the improvement works for the revitalisation of Ma Wan Chung Village (**Annex 4**).

7. In considering the aforementioned work schedules, DEVB, relevant policy bureaux and departments will integrate the outcomes of the above relevant studies and draw up the economic (including recreation and tourism) development strategy proposal by the end of 2015/early 2016. ESD SC will be consulted separately on the staged results of the large-scale studies concerned in the coming year. The key work plans during that period are attached at **Annex 5**.

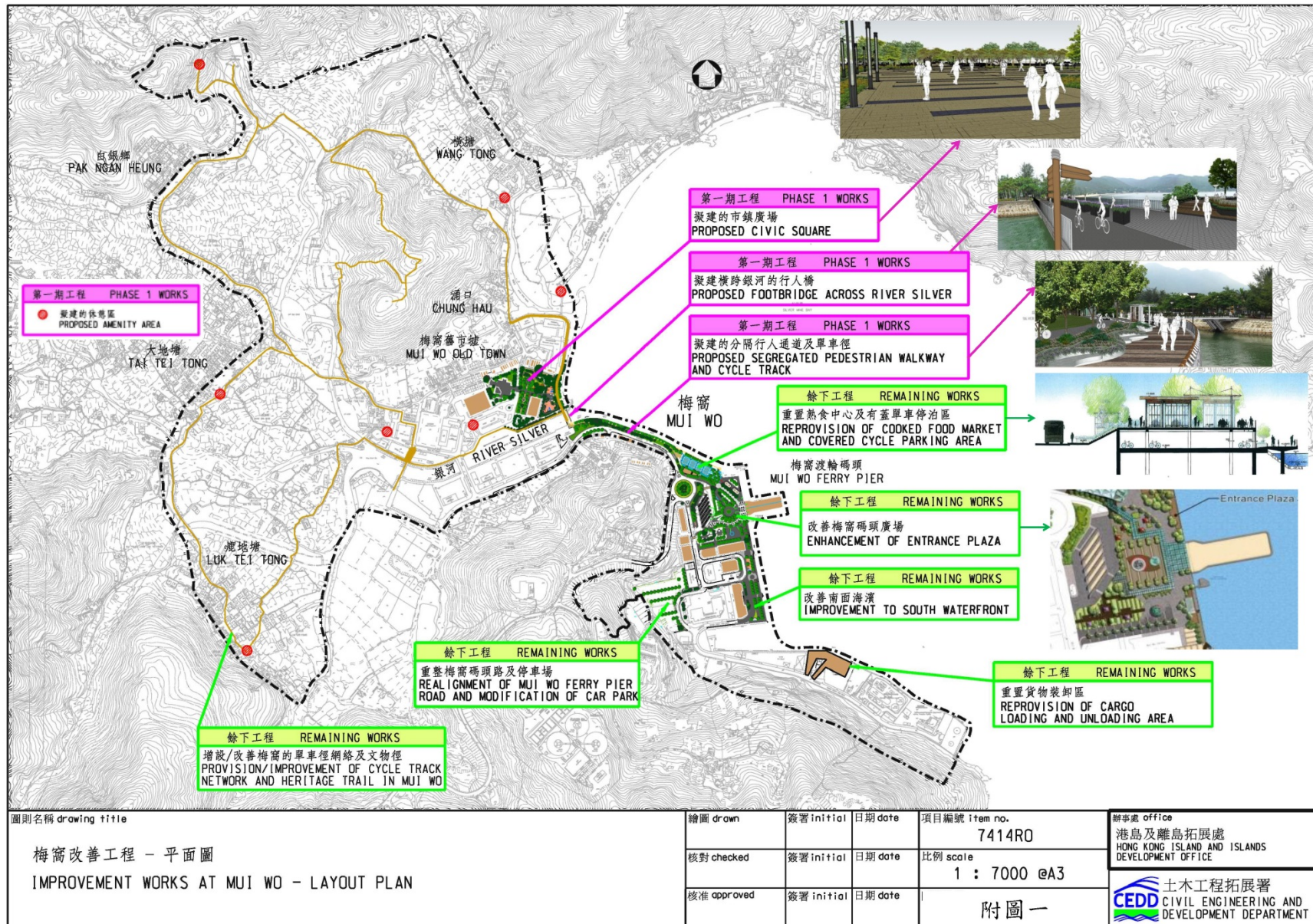
**Development Bureau**  
**November 2014**

# 大澳改善工程 Improvement Works at Tai O

## Annex 1

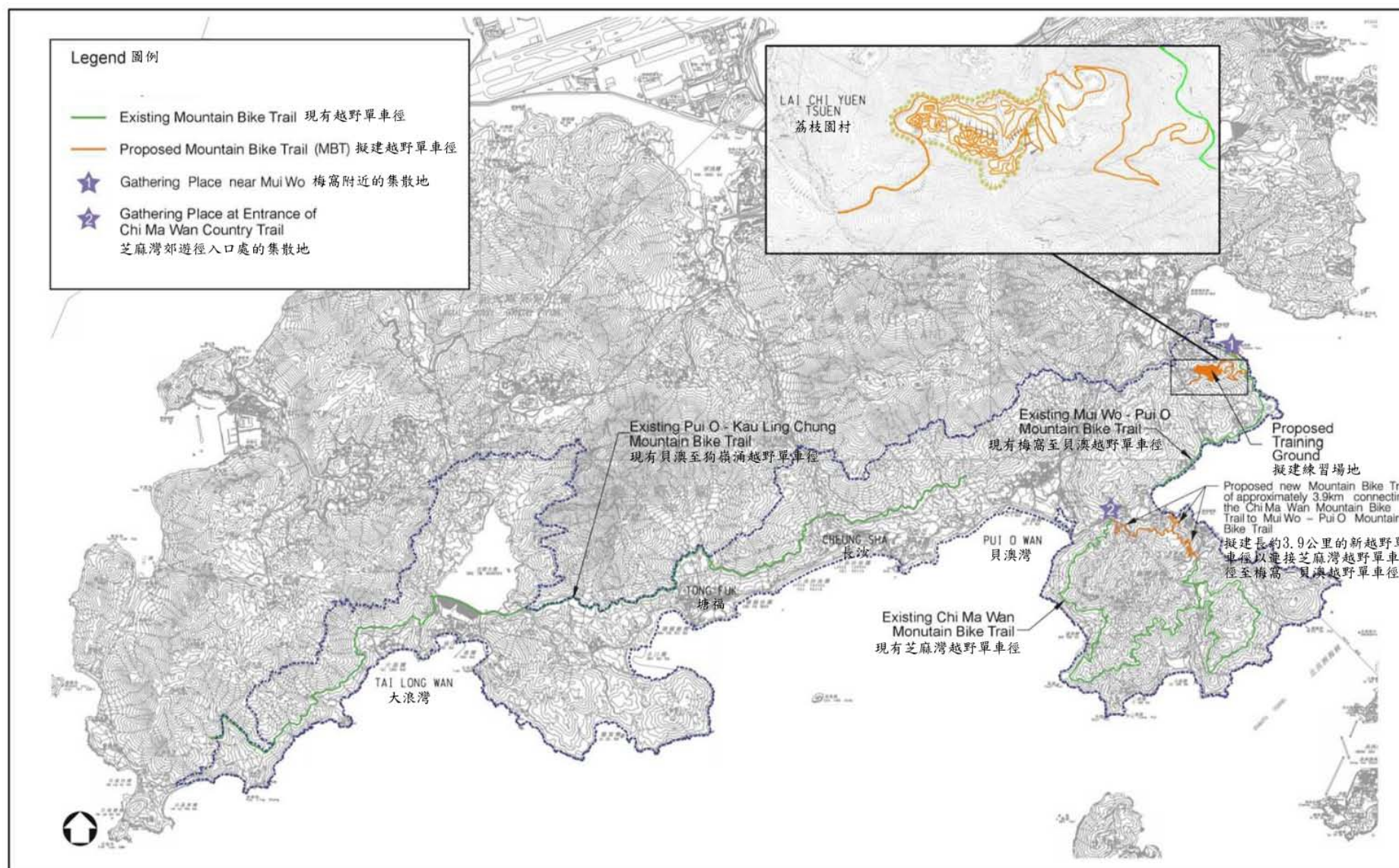


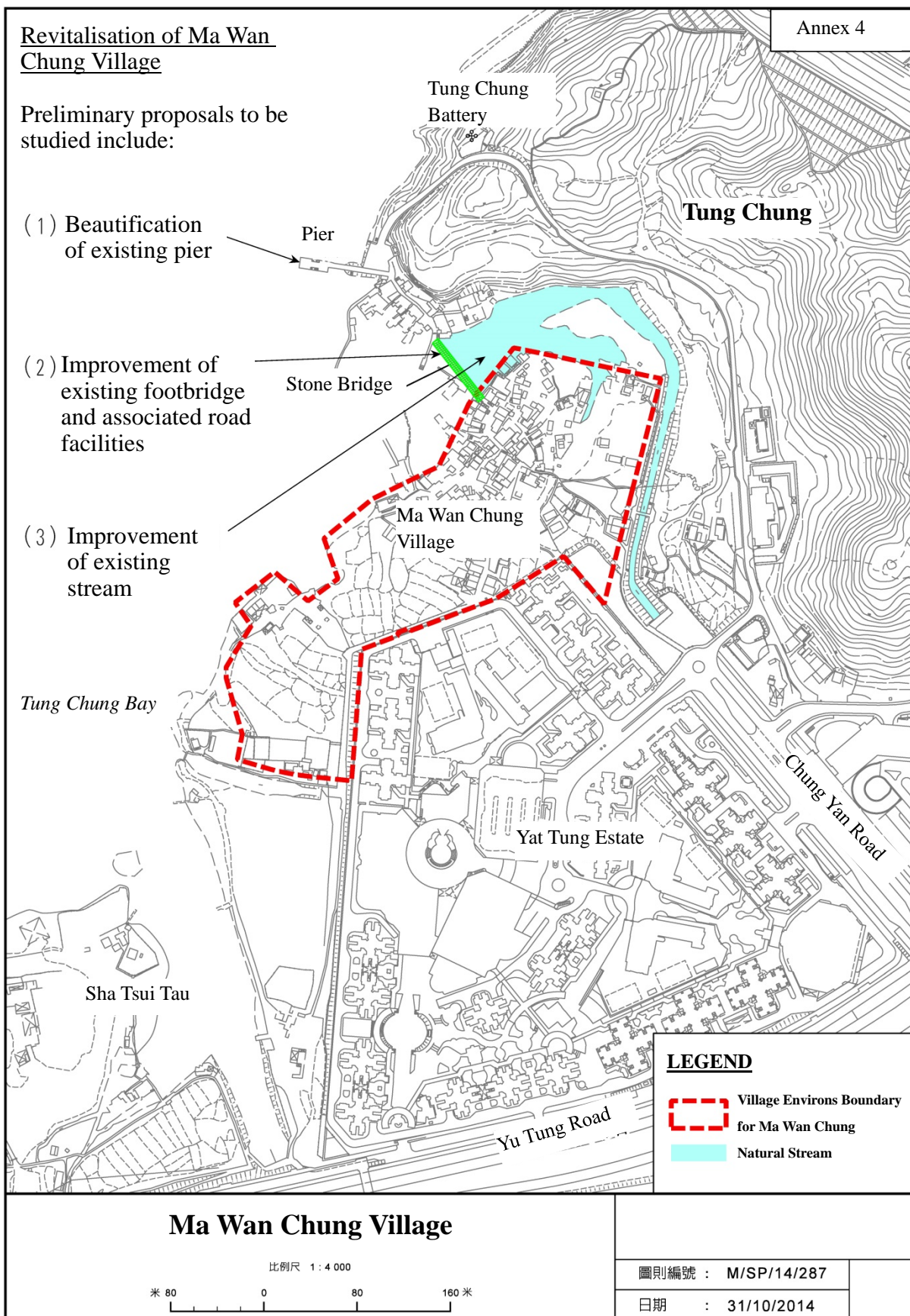






# 越野單車徑網絡 Mountain Bike Trail Network







## **Major Work Plans**

### **First (Joint) Meeting** (Held on 10 October 2014)

- To carry out preliminary discussions of the economic and social development proposals submitted by Members of the Lantau Development Advisory Committee (LanDAC) and the public

### **Second Meeting** (12 November 2014)

- To discuss the work plans of the Economic and Social Development Subcommittee
- To examine the results of a study conducted by the logistics industry

### **Third Meeting** (early 2015) (a joint meeting with the Planning and Conservation Subcommittee (PC SC) if necessary)

- The employment situation, vocational training and employment support services in Lantau (to be confirmed)

### **Fourth Meeting** (mid-2015) (the meeting can be split into two if necessary, in which the top two items on the agenda will be discussed first, and the remaining item will be discussed in a joint meeting with PC SC; or be conducted in the form of a joint meeting to discuss the three related items on the agenda in one go)

- To review the overall economic development strategy for Lantau, and the recommendations made in the preliminary market positioning study regarding the land for commercial use in Sunny Bay and other major developments, so as to offer its views for PC SC's consideration (subject to the progress of the study)
- To review the staged results of the study on the recreational and tourism development of Lantau, so as to offer its views for PC SC's consideration (subject to the progress of the study)
- To review the draft strategy for the overall spatial development and conservation of Lantau



**Fifth Meeting** (late 2015)

- To review the planning situation of the land for economic use in the initial land use options under the study on the reclamation at Sunny Bay (subject to the progress of the study)
- To discuss the draft proposals for the overall economic development strategy for Lantau

**Sixth Meeting** (early 2016)

- To review the preliminary results of the social-economic assessment of the study on the topside development at Hong Kong Boundary Crossing Facilities Island of the Hong Kong-Zhuhai-Macao Bridge (subject to the progress of the study)

**Seventh Meeting** (mid-2016)

- To review the planning situation of the land for the economic use in the draft concept development plan under the strategic studies for artificial islands in the central waters (subject to the progress of the study)