

**Lantau Development Advisory Committee
Planning and Conservation Subcommittee**

Work Plan

PURPOSE

This paper sets out the proposed work plan of the Planning and Conservation Subcommittee of the Lantau Development Advisory Committee, including its key tasks and deliverables.

INTRODUCTION

2. In his 2014 Policy Address, the Chief Executive announced the establishment of the Lantau Development Advisory Committee (LanDAC) to devise an economic and social development strategy for Lantau while striking a balance between development and conservation needs.

3. At the meeting of LanDAC held on 19 July 2014, it was agreed to set up four Subcommittees to handle the various proposals covering different aspects. In this regard, the Planning and Conservation Subcommittee (PC SC) has been tasked to handle proposals concerning development, planning and use of land, environment and conservation.

KEY TASKS AND DELIVERABLES

4. The terms of reference of PC SC include advising LanDAC on the formulation of an overall spatial development and conservation strategy for the development of Lantau in the short, medium and long term; and examining proposals in line with the overall spatial development and conservation strategy with a view to identifying worthwhile and practicable actions/measures for implementation in the short and medium term while long-term ones are under study (**Annex 1 of PC SC Paper No. 01/2014**). To enable PS SC to achieve its work

objectives in a well-informed, systematic and comprehensive manner, it is proposed that the work of PS SC should cover the following key tasks, with proposals of the Economic and Social Development Subcommittee and the Traffic and Transport Subcommittee suitably incorporated:

- review of the development concept, the planned housing, economic/commercial, tourism/recreational and transport infrastructure items of Lantau, as well as the latest planning for Lantau;
- review of the baseline conditions regarding ecological, heritage and landscape conservation;
- formulation of a set of guiding principles on planning and conservation for Lantau, based on the vision for Lantau development and the strategic positioning and development direction for Lantau as agreed by LanDAC at its meeting on 19 July 2014, which will serve as reference when devising the various plans and assessing proposals;
- formulation of a conservation plan for Lantau;
- review of considerations underlying economic and social development in Lantau;
- review of the provision of traffic and transport infrastructure/facilities for Lantau;
- identification of new development opportunities and land use requirements having regard to the conservation plan and the principle of sustainable development;
- examination of the proposals submitted by LanDAC Members and the public with a view to identifying the worthwhile and practicable proposals for implementation;
- formulation of sectoral development plans on housing, economic/commercial, tourism/recreation matters, etc.; and the future population/employment targets and distribution;
- review of the requirements for transport and other supporting infrastructure;
- strategic review of the environmental and social implications;

- consolidation of the conservation and sectoral development plans to formulate the draft overall spatial development and conservation strategy for Lantau; and
- recommendations on actions/measures to be taken forward in the short and medium terms.

5. The proposed task flow chart is attached in **Annex 1**. The key deliverables of PS SC will be a draft overall spatial development and conservation strategy comprising conservation and sectoral development plans, and recommendations on the practicable actions/measures to be taken forward in the short and medium term.

WORK PLAN

6. Having regard to the amount of work likely to be created from the proposed tasks, it is anticipated that the draft overall spatial development and conservation strategy will take shape by mid 2015. Tentatively, 6 PS SC meetings are proposed to be held to accomplish the key tasks as mentioned above.

ADVICE SOUGHT

7. PC SC is invited to consider the proposed key tasks, deliverables and work plan as outlined in paragraphs 4 to 6 above.

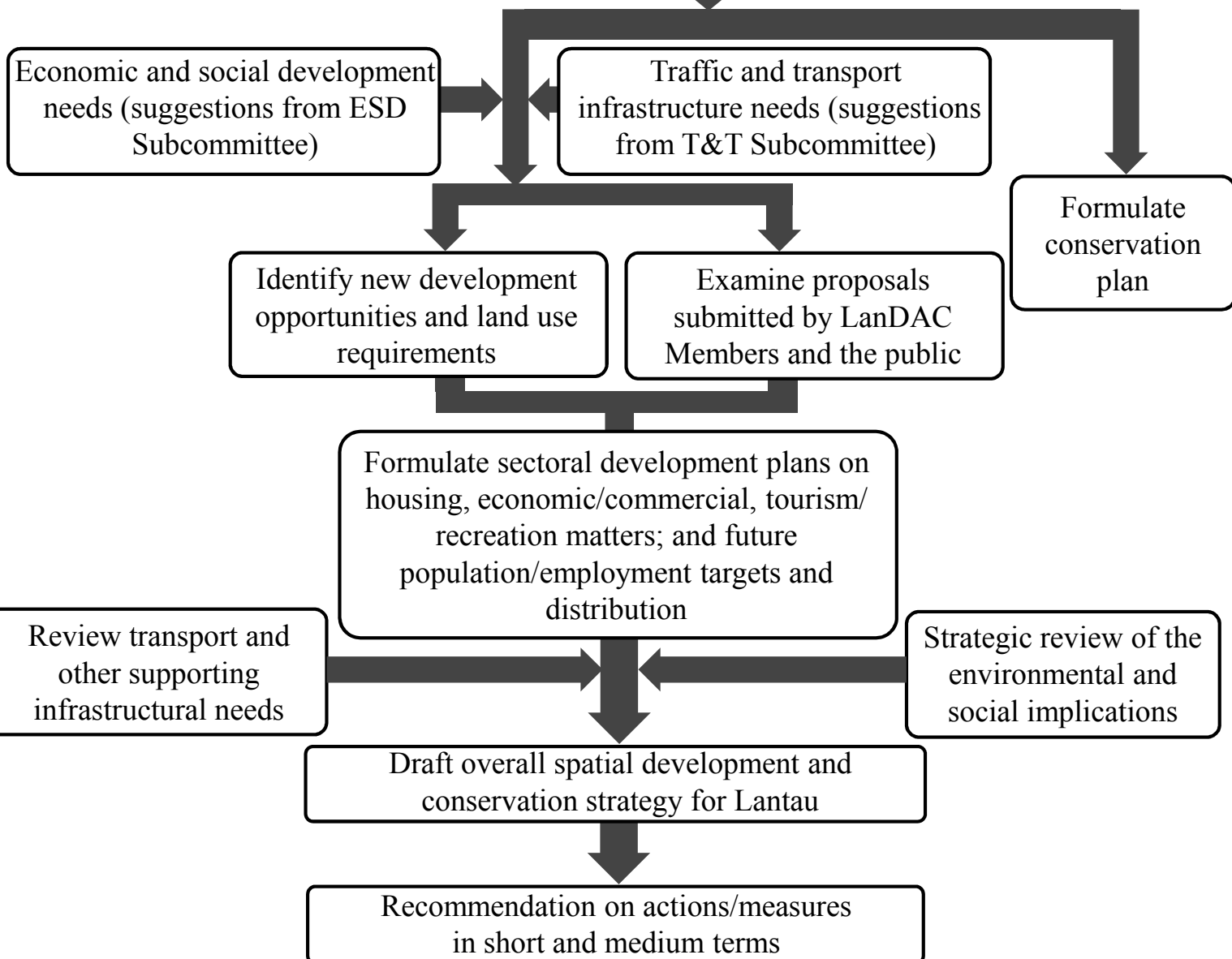
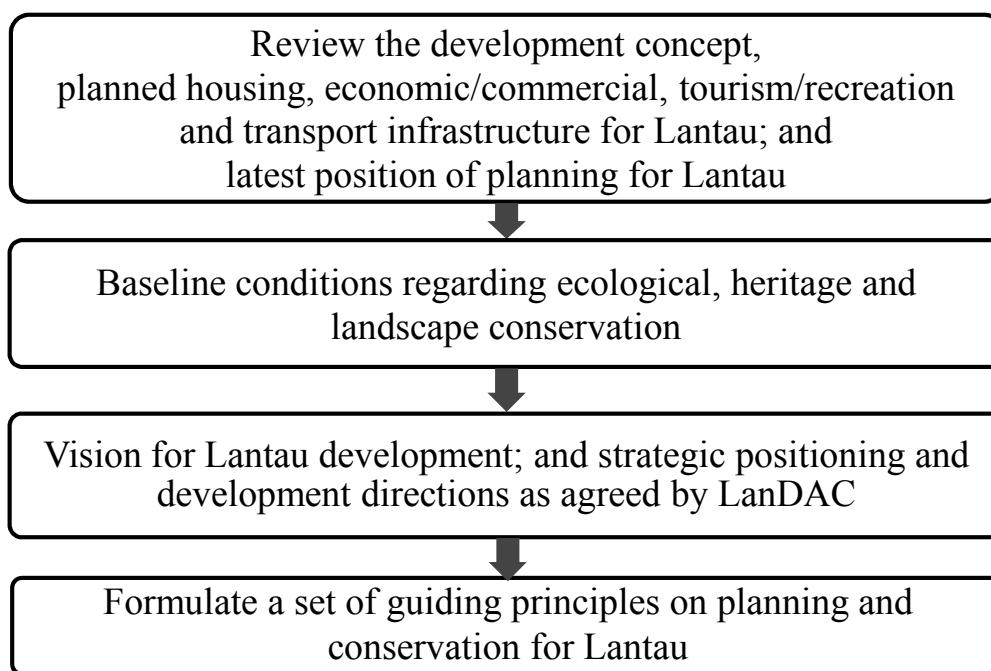
Attachments

Annex 1: Flowchart of Proposed Key Tasks

Annex 2: Proposed Preliminary Work Plan for 2014-15

Planning Department
October 2014

**Planning and Conservation Subcommittee
Proposed Key Tasks - Flow Chart**



Annex 2

**Planning and Conservation Subcommittee
Proposed Preliminary Work Plan**

First (Joint) Meeting (10.10.2014)

- Review of the development concept, the planned housing, economic/commercial, tourism/recreation and transport infrastructure of Lantau as well as the latest position of planning for Lantau; and
- Review of the baseline conditions regarding ecological, heritage and landscape conservation.

Second Meeting (early November 2014)

- Formulation of a set of guiding principles for Lantau based on the vision for Lantau development as well as the strategic positioning and development directions agreed by LanDAC; and
- Formulation of a conservation plan for Lantau, setting out the major sites for ecological, heritage and landscape conservation and related measures.

[Reporting back on progress to the LanDAC meeting scheduled for November 2014]

Third Meeting (mid December 2014)

- Review of the considerations underlying economic and social development in Lantau;
- Review of the provision of traffic and transport infrastructure for Lantau; and
- Identification of new development opportunities and land use requirements having regard to the conservation plan and the principle of sustainable development.

Fourth Meeting (end of January/early February 2015) (to be held jointly with the Economic and Social Development Subcommittee if necessary)

- Overview the economic development opportunities in North Lantau;
- Evaluation of the proposals submitted by LanDAC Members and the public on conservation, housing, economic/commercial and tourism/recreation matters; and
- Consideration of the preliminary development concepts/proposals based on the identified development opportunities.

Fifth Meeting (mid March 2015)

- Formulation of sectoral development plans on housing, economic/commercial, tourism/recreation matters, etc.; and the future population/employment targets and distribution;
- Review of the requirements for transport and other supporting infrastructure; and
- Strategic review of the environmental and social implications.

Sixth Meeting (early May 2015)

- Formulation of the draft overall spatial development and conservation strategy for Lantau; and
- Recommendations on short-term and medium-term actions/measures to be taken forward.