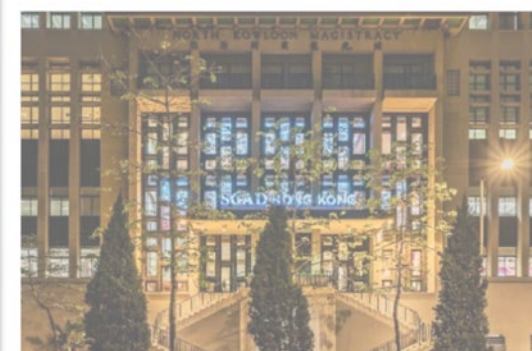


# Revitalising Historic Buildings Through Partnership Scheme

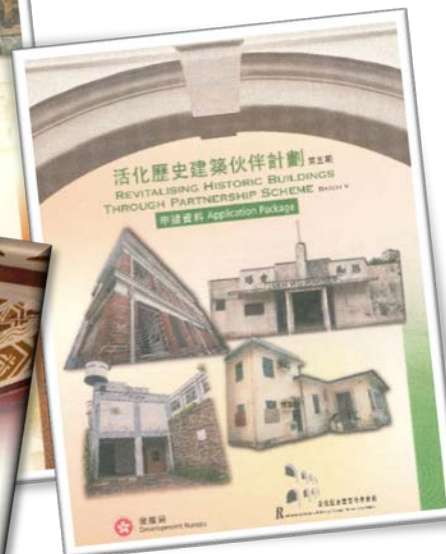
## Experience Sharing on Assessment

3 December 2019



發展局  
Development Bureau







# Assessment Criteria



# Creative Ideas



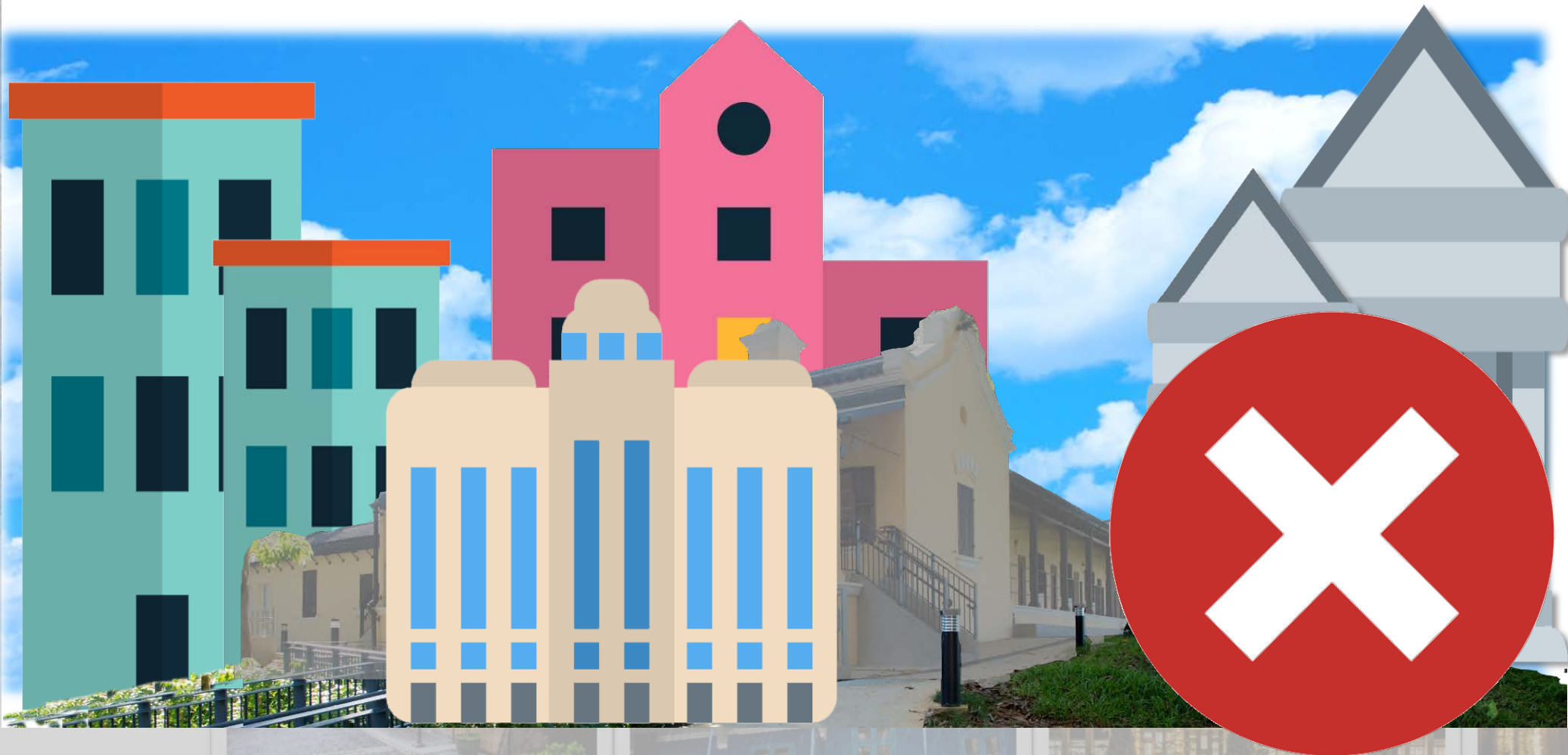
CREATE





-

# Make good use of the original historical buildings





## Degree of Public Access

- Open the historic buildings to the public
- Give the historic buildings new lease of life
- Provide guided tours





# Management Team

- Commitment and devotion
- Long-term involvement in the project with determination and sustainable management

